



[Go to Product page](#)

Datasheet for ABIN7239773  
**anti-Cathepsin Z antibody**

1 Image

Overview

Quantity:	200 µL
Target:	Cathepsin Z (CTSZ)
Reactivity:	Human, Mouse, Rat
Host:	Rabbit
Clonality:	Polyclonal
Conjugate:	This Cathepsin Z antibody is un-conjugated
Application:	Western Blotting (WB), ELISA

Product Details

Immunogen:	Recombinant protein of human CTSZ
Isotype:	IgG
Characteristics:	Polyclonal Antibody
Purification:	Affinity purification

Target Details

Target:	Cathepsin Z (CTSZ)
Alternative Name:	CTSZ ( <a href="#">CTSZ Products</a> )
Background:	The protein encoded by this gene is a lysosomal cysteine proteinase and member of the peptidase C1 family. It exhibits both carboxy-monopeptidase and carboxy-dipeptidase activities. The encoded protein has also been known as cathepsin X and cathepsin P. This gene is expressed ubiquitously in cancer cell lines and primary tumors and, like other members of

## Target Details

this family, may be involved in tumorigenesis.

Molecular Weight: 34 kDa

UniProt: [Q9UBR2](#)

Pathways: [Peptide Hormone Metabolism, Regulation of Systemic Arterial Blood Pressure by Hormones](#)

## Application Details

Application Notes: WB 1:500-1:1000

Restrictions: For Research Use only

## Handling

Format: Liquid

Concentration: 0.4 mg/mL

Buffer: PBS with 0.05 % sodium azide and 50 % glycerol, PH7.4

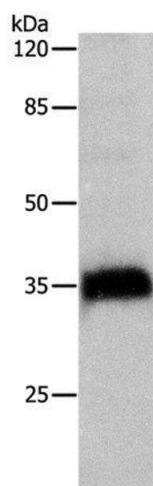
Preservative: Sodium azide

Precaution of Use: This product contains Sodium azide: a POISONOUS AND HAZARDOUS SUBSTANCE which should be handled by trained staff only.

Storage: -20 °C

Storage Comment: Store at -20°C. Avoid freeze / thaw cycles.

## Images



### Western Blotting

**Image 1.** Western Blot analysis of Hela cell using CTSZ Polyclonal Antibody at dilution of 1:500