

Datasheet for ABIN7239776

anti-CBX6 antibody**1** Image[Go to Product page](#)

Overview

Quantity:	200 µL
Target:	CBX6
Reactivity:	Human
Host:	Rabbit
Clonality:	Polyclonal
Conjugate:	This CBX6 antibody is un-conjugated
Application:	Western Blotting (WB), ELISA

Product Details

Immunogen:	Recombinant protein of human CBX6
Isotype:	IgG
Characteristics:	Polyclonal Antibody
Purification:	Affinity purification

Target Details

Target:	CBX6
Alternative Name:	CBX6 (CBX6 Products)
Background:	CBX6 (chromobox protein homolog 6) is a 412 amino acid protein that is a component of the chromatin-associated PcG complex. Through interaction with PcG, CBX6 modifies chromatin and maintains the transcriptionally repressive state of genes. Members of the chromobox domain protein family are characterized by the presence of a 37 amino acid chromobox

Target Details

(CHRRomatin Organization MOfifier) domain. This domain plays a mechanistic role in targeting chromodomain proteins to specific regions of the nucleus.

Molecular Weight: 44 kDa

UniProt: [O95503](#)

Application Details

Application Notes: WB 1:500-1:2000

Restrictions: For Research Use only

Handling

Format: Liquid

Concentration: 0.4 mg/mL

Buffer: PBS with 0.05 % sodium azide and 50 % glycerol, PH7.4

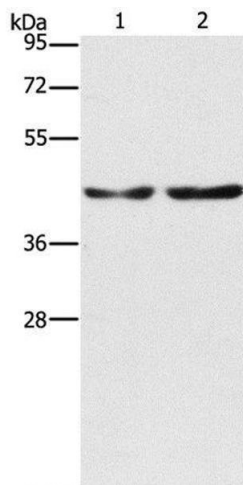
Preservative: Sodium azide

Precaution of Use: This product contains Sodium azide: a POISONOUS AND HAZARDOUS SUBSTANCE which should be handled by trained staff only.

Storage: -20 °C

Storage Comment: Store at -20°C. Avoid freeze / thaw cycles.

Images



Western Blotting

Image 1. Western Blot analysis of Hela and 293T cell using CBX6 Polyclonal Antibody at dilution of 1:600