



[Go to Product page](#)

Datasheet for ABIN723980

anti-CREB1 antibody (pSer133)

7 Images

1 Publication

Overview

Quantity:	100 µL
Target:	CREB1
Binding Specificity:	pSer133
Reactivity:	Human, Mouse, Rat, Pig
Host:	Rabbit
Clonality:	Polyclonal
Conjugate:	This CREB1 antibody is un-conjugated
Application:	Western Blotting (WB), ELISA, Immunohistochemistry (Paraffin-embedded Sections) (IHC (p)), Flow Cytometry (FACS), Immunofluorescence (Paraffin-embedded Sections) (IF (p)), Immunofluorescence (Cultured Cells) (IF (cc)), Immunohistochemistry (Frozen Sections) (IHC (fro))

Product Details

Immunogen:	KLH conjugated synthetic phosphopeptide derived from human CREB-1 around the phosphorylation site of Ser133 [RP(p-S)YR]
Isotype:	IgG
Cross-Reactivity:	Human, Mouse, Pig, Rat
Predicted Reactivity:	Dog,Cow,Sheep,Chicken
Purification:	Purified by Protein A.

Target Details

Target:	CREB1
Alternative Name:	CREB-1 (CREB1 Products)
Background:	<p>Synonyms: CREB, Cyclic AMP-responsive element-binding protein 1, CREB-1, cAMP-responsive element-binding protein 1, CREB1</p> <p>Background: Phosphorylation-dependent transcription factor that stimulates transcription upon binding to the DNA cAMP response element (CRE), a sequence present in many viral and cellular promoters. Transcription activation is enhanced by the TORC coactivators which act independently of Ser-133 phosphorylation. Involved in different cellular processes including the synchronization of circadian rhythmicity and the differentiation of adipose cells.</p>
Gene ID:	1385
UniProt:	P16220
Pathways:	TLR Signaling , Fc-epsilon Receptor Signaling Pathway , EGFR Signaling Pathway , Neurotrophin Signaling Pathway , Thyroid Hormone Synthesis , Activation of Innate immune Response , Myometrial Relaxation and Contraction , Regulation of Cell Size , Toll-Like Receptors Cascades , G-protein mediated Events , Interaction of EGFR with phospholipase C-gamma , Positive Regulation of fat Cell Differentiation

Application Details

Application Notes:	WB 1:300-5000 ELISA 1:500-1000 FCM 1:20-100 IHC-P 1:200-400 IHC-F 1:100-500 IF(IHC-P) 1:50-200 IF(IHC-F) 1:50-200 IF(ICC) 1:50-200
Restrictions:	For Research Use only

Handling

Format:	Liquid
Concentration:	1 µg/µL
Buffer:	0.01M TBS(pH 7.4) with 1 % BSA, 0.02 % Proclin300 and 50 % Glycerol.

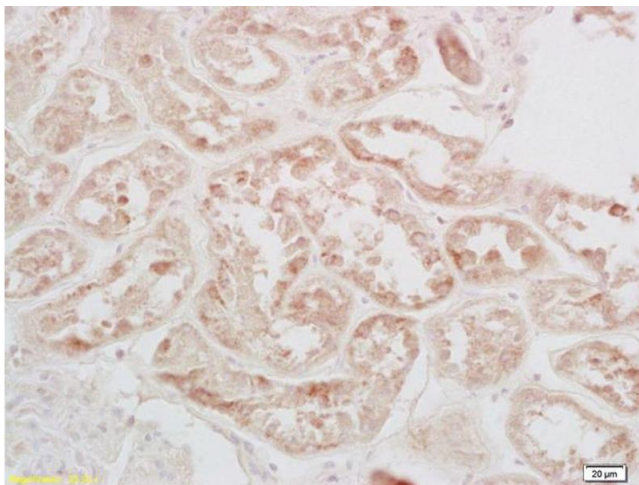
Handling

Preservative:	ProClin
Precaution of Use:	This product contains ProClin: a POISONOUS AND HAZARDOUS SUBSTANCE, which should be handled by trained staff only.
Storage:	4 °C,-20 °C
Storage Comment:	Shipped at 4°C. Store at -20°C for one year. Avoid repeated freeze/thaw cycles.
Expiry Date:	12 months

Publications

Product cited in: Xu, Xu, Luan, Jiang, Tian, Zhang: "Cardioprotection against experimental myocardial ischemic injury using cornin." in: **Brazilian journal of medical and biological research = Revista brasileira de pesquisas medicas e biologicas**, Vol. 49, Issue 2, pp. e5039, (2016) ([PubMed](#)).

Images



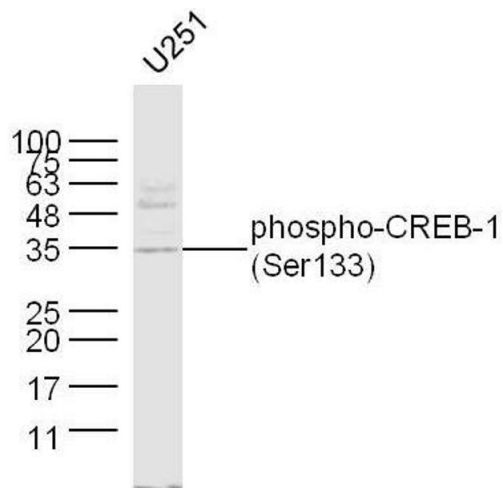
Immunohistochemistry

Image 1. Formalin-fixed and paraffin embedded human kidney labeled with Rabbit Anti-phospho-CREB-1(Ser133) Polyclonal Antibody (ABIN723980) at 1:200 followed by conjugation to the secondary antibody and DAB staining.



Immunohistochemistry

Image 2. Formalin-fixed and paraffin embedded mouse hippocampus labeled with Rabbit Anti-phospho-CREB-1(Ser133) Polyclonal Antibody, Unconjugated 1:500 followed by conjugation to the secondary antibody



Western Blotting

Image 3. U251 lysates probed with CREB-1(Ser133) Polyclonal Antibody, unconjugated at 1:300 overnight at 4°C followed by a conjugated secondary antibody at 1:10000 for 60 minutes at 37°C.

Please check the [product details page](#) for more images. Overall 7 images are available for ABIN723980.