



[Go to Product page](#)

Datasheet for ABIN7239830  
**anti-CLDND1 antibody**

2 Images

Overview

|              |                                       |
|--------------|---------------------------------------|
| Quantity:    | 200 µL                                |
| Target:      | CLDND1                                |
| Reactivity:  | Human, Mouse                          |
| Host:        | Rabbit                                |
| Clonality:   | Polyclonal                            |
| Conjugate:   | This CLDND1 antibody is un-conjugated |
| Application: | ELISA, Immunohistochemistry (IHC)     |

Product Details

|                  |                                     |
|------------------|-------------------------------------|
| Immunogen:       | Recombinant protein of human CLDND1 |
| Isotype:         | IgG                                 |
| Characteristics: | Polyclonal Antibody                 |
| Purification:    | Affinity purification               |

Target Details

|                   |  |
|-------------------|--|
| Target:           | CLDND1   |
| Alternative Name: | CLDND1 ( <a href="#">CLDND1 Products</a> )   |
| Background:       | CLDND1 (claudin domain containing 1), also known as C3orf4 or HSPC174, is a 253 amino acid multi-pass membrane protein that is expressed at high levels in adult brain and at lower levels in adult heart. Existing as two alternatively spliced isoforms, CLDND1 is encoded by a gene that maps to human chromosome 3, which houses over 1,100 genes, including a chemokine |

## Target Details

---

receptor (CKR) gene cluster and a variety of human cancer-related gene loci. Key tumor suppressing genes on chromosome 3 include those that encode the apoptosis mediator RASSF1, the cell migration regulator HYAL1 and the angiogenesis suppressor SEMA3B. Marfan Syndrome, porphyria, von Hippel-Lindau syndrome, osteogenesis imperfecta and Charcot-Marie-Tooth Disease are a few of the numerous genetic diseases associated with chromosome 3.

UniProt: [Q9NY35](#)

## Application Details

---

Application Notes: IHC 1:50-1:200

Restrictions: For Research Use only

## Handling

---

Format: Liquid

Concentration: 0.2 mg/mL

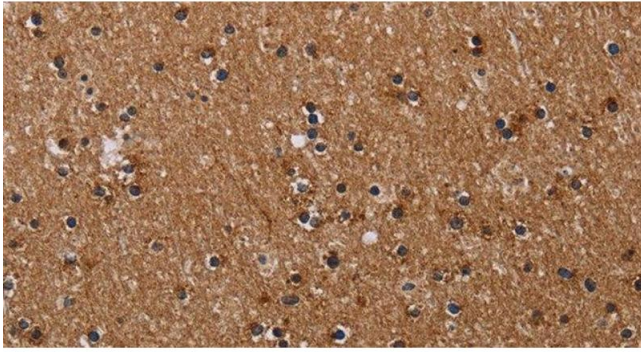
Buffer: PBS with 0.05 % sodium azide and 50 % glycerol, PH7.4

Preservative: Sodium azide

Precaution of Use: This product contains Sodium azide: a POISONOUS AND HAZARDOUS SUBSTANCE which should be handled by trained staff only.

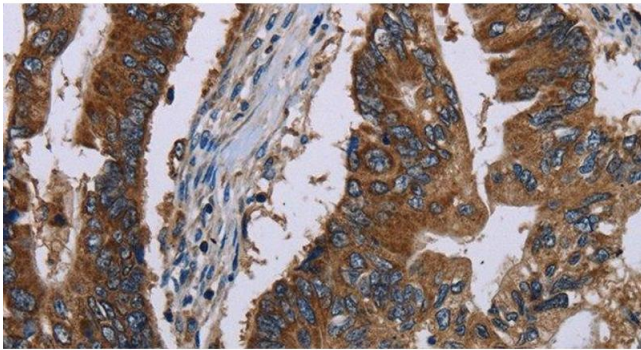
Storage: -20 °C

Storage Comment: Store at -20°C. Avoid freeze / thaw cycles.



#### Immunohistochemistry (Paraffin-embedded Sections)

**Image 1.** Immunohistochemistry of paraffin-embedded Human brain tissue using CLDND1 Polyclonal Antibody at dilution 1:40



#### Immunohistochemistry (Paraffin-embedded Sections)

**Image 2.** Immunohistochemistry of paraffin-embedded Human colon cancer tissue using CLDND1 Polyclonal Antibody at dilution 1:40