

Datasheet for ABIN7239986

**anti-HINT2 antibody****3** Images[Go to Product page](#)

## Overview

Quantity:	200 µL
Target:	HINT2
Reactivity:	Human, Mouse
Host:	Rabbit
Clonality:	Polyclonal
Conjugate:	This HINT2 antibody is un-conjugated
Application:	ELISA, Immunohistochemistry (IHC), Western Blotting (WB)

## Product Details

Immunogen:	Recombinant protein of human HINT2
Isotype:	IgG
Characteristics:	Polyclonal Antibody
Purification:	Affinity purification

## Target Details

Target:	HINT2
Alternative Name:	HINT2 ( <a href="#">HINT2 Products</a> )
Background:	Hint2 (histidine triad nucleotide binding protein 2), also known as HIT-17, is a 163 amino acid secreted protein that contains one HIT domain, a histidine triad that has catalytic activity toward the -phosphate of ribonucleotides. Via its HIT domain, Hint2 is thought to function as a hydrolase that is encoded by a gene whichHuman, Mouseaps to chromosome 9. Chromosome 9

## Target Details

contains 145 million base pairs and comprises 4 % of the human genome, encoding nearly 900 genes. Hereditary hemorrhagic telangiectasia and Familial dysautonomia are both associated with chromosome 9. Notably, chromosome 9 encompasses the largest interferon family gene cluster.

Molecular Weight: 17 kDa

UniProt: [Q9BX68](#)

## Application Details

Application Notes: WB 1:500-1:2000, IHC 1:50-1:200

Restrictions: For Research Use only

## Handling

Format: Liquid

Concentration: 0.8 mg/mL

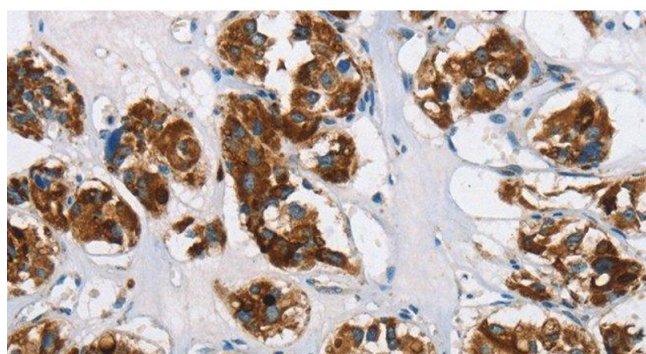
Buffer: PBS with 0.05 % sodium azide and 50 % glycerol, PH7.4

Preservative: Sodium azide

Precaution of Use: This product contains Sodium azide: a POISONOUS AND HAZARDOUS SUBSTANCE which should be handled by trained staff only.

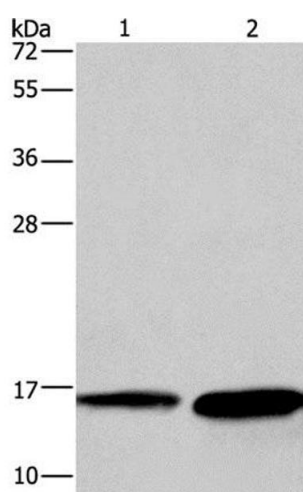
Storage: -20 °C

Storage Comment: Store at -20°C. Avoid freeze / thaw cycles.



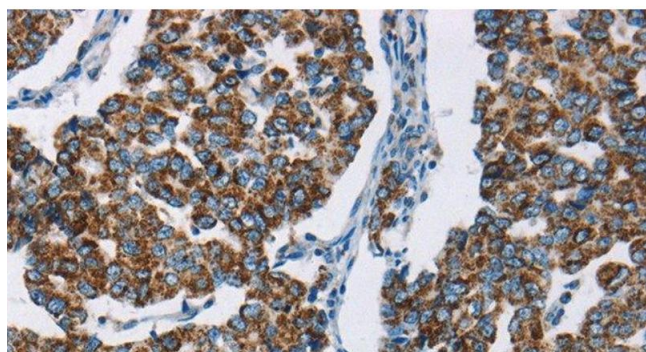
#### Immunohistochemistry (Paraffin-embedded Sections)

**Image 1.** Immunohistochemistry of paraffin-embedded Human thyroid cancer using HINT2 Polyclonal Antibody at dilution of 1:50



#### Western Blotting

**Image 2.** Western Blot analysis of Mouse heart and Human hepatocellular carcinoma tissue using HINT2 Polyclonal Antibody at dilution of 1:300



#### Immunohistochemistry (Paraffin-embedded Sections)

**Image 3.** Immunohistochemistry of paraffin-embedded Human breast cancer using HINT2 Polyclonal Antibody at dilution of 1:50