

Datasheet for ABIN7240022

**anti-ING2 antibody****3** Images[Go to Product page](#)

## Overview

Quantity:	200 µL
Target:	ING2
Reactivity:	Human, Mouse
Host:	Rabbit
Clonality:	Polyclonal
Conjugate:	This ING2 antibody is un-conjugated
Application:	Western Blotting (WB), ELISA, Immunohistochemistry (IHC)

## Product Details

Immunogen:	Recombinant protein of human ING2
Isotype:	IgG
Characteristics:	Polyclonal Antibody
Purification:	Affinity purification

## Target Details

Target:	ING2
Alternative Name:	ING2 ( <a href="#">ING2 Products</a> )
Background:	This gene is a member of the inhibitor of growth (ING) family. Members of the ING family associate with and modulate the activity of histone acetyltransferase (HAT) and histone deacetylase (HDAC) complexes and function in DNA repair and apoptosis

## Target Details

Molecular Weight:	33 kDa
UniProt:	<a href="#">Q9H160</a>
Pathways:	<a href="#">Chromatin Binding</a> , <a href="#">Autophagy</a> , <a href="#">Negative Regulation of intrinsic apoptotic Signaling</a>

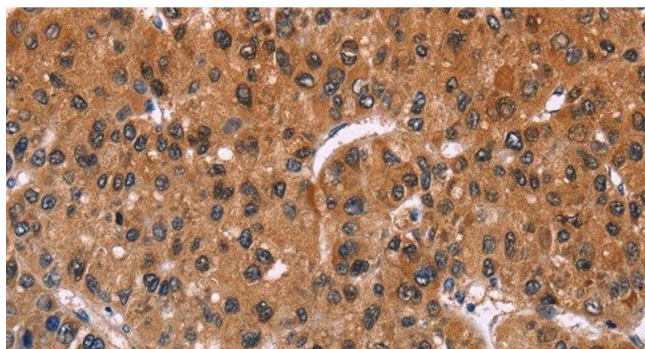
## Application Details

Application Notes:	WB 1:500-1:2000, IHC 1:50-1:200
Restrictions:	For Research Use only

## Handling

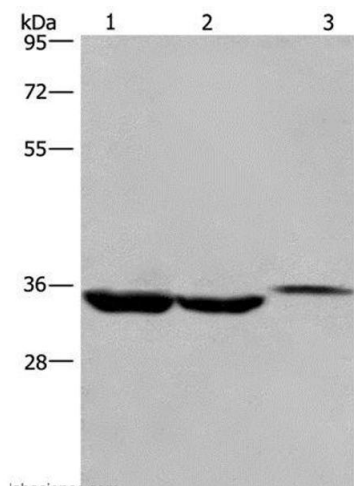
Format:	Liquid
Concentration:	0.5 mg/mL
Buffer:	PBS with 0.05 % sodium azide and 50 % glycerol, PH7.4
Preservative:	Sodium azide
Precaution of Use:	This product contains Sodium azide: a POISONOUS AND HAZARDOUS SUBSTANCE which should be handled by trained staff only.
Storage:	-20 °C
Storage Comment:	Store at -20°C. Avoid freeze / thaw cycles.

## Images



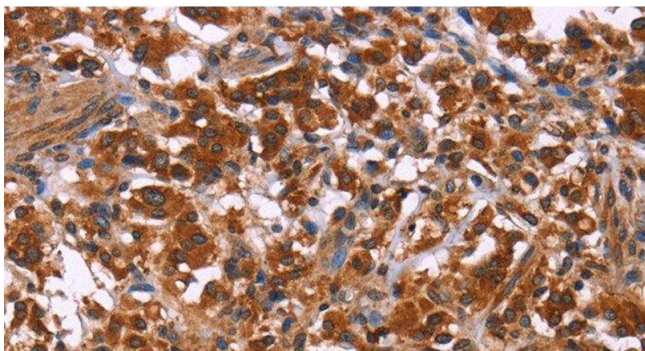
### Immunohistochemistry (Paraffin-embedded Sections)

**Image 1.** Immunohistochemistry of paraffin-embedded Human liver cancer using ING2 Polyclonal Antibody at dilution of 1:40



### Western Blotting

**Image 2.** Western Blot analysis of Lovo cell, Human liver cancer tissue and Mouse kidney tissue using ING2 Polyclonal Antibody at dilution of 1:425



### Immunohistochemistry (Paraffin-embedded Sections)

**Image 3.** Immunohistochemistry of paraffin-embedded Human thyroid cancer using ING2 Polyclonal Antibody at dilution of 1:40