



Datasheet for ABIN7240061 anti-GNRH1 antibody



[Go to Product page](#)

2 Images

Overview

Quantity:	200 µL
Target:	GNRH1
Reactivity:	Human
Host:	Rabbit
Clonality:	Polyclonal
Conjugate:	This GNRH1 antibody is un-conjugated
Application:	Immunohistochemistry (IHC), ELISA

Product Details

Immunogen:	Recombinant protein of human GNRH1
Isotype:	IgG
Characteristics:	Polyclonal Antibody
Purification:	Affinity purification

Target Details

Target:	GNRH1
Alternative Name:	GNRH1 (GNRH1 Products)
Background:	The protein encoded by this gene is secreted and then cleaved to form the 10 aa luteinizing hormone-releasing hormone (LHRH, also known as gonadoliberin-1), and prolactin release-inhibiting factor (also known as GnRH-associated peptide 1). LHRH stimulates the release of luteinizing and follicle stimulating hormones, which are important for reproduction. Mutation in

Target Details

this gene are associated with hypogonadotropic hypogonadism. Alternatively spliced transcript variants have been described for this gene.

UniProt: [P01148](#)

Pathways: [Hormone Activity](#)

Application Details

Application Notes: IHC 1:100-1:300

Restrictions: For Research Use only

Handling

Format: Liquid

Concentration: 1.2 mg/mL

Buffer: PBS with 0.05 % sodium azide and 50 % glycerol, PH7.4

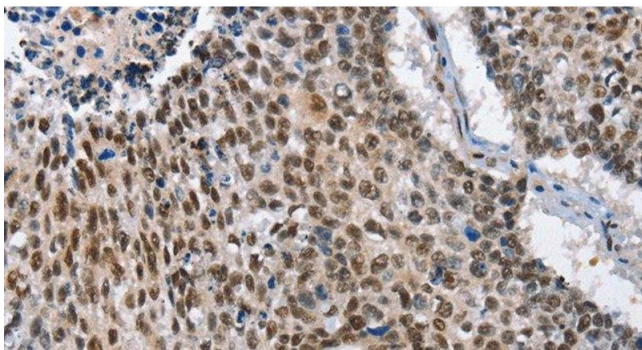
Preservative: Sodium azide

Precaution of Use: This product contains Sodium azide: a POISONOUS AND HAZARDOUS SUBSTANCE which should be handled by trained staff only.

Storage: -20 °C

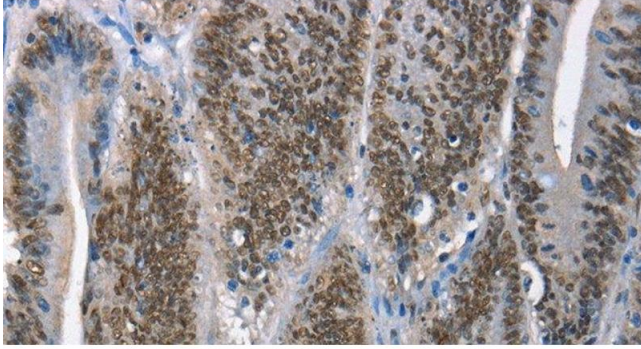
Storage Comment: Store at -20°C. Avoid freeze / thaw cycles.

Images



Immunohistochemistry (Paraffin-embedded Sections)

Image 1. Immunohistochemistry of paraffin-embedded Human lung cancer tissue using GNRH1 Polyclonal Antibody at dilution 1:65



Immunohistochemistry (Paraffin-embedded Sections)

Image 2. Immunohistochemistry of paraffin-embedded Human colon cancer tissue using GNRH1 Polyclonal Antibody at dilution 1:65