



[Go to Product page](#)

Datasheet for ABIN7240088

## anti-MCM2 antibody

### 2 Images

#### Overview

Quantity:	200 µL
Target:	MCM2
Reactivity:	Human, Mouse
Host:	Rabbit
Clonality:	Polyclonal
Conjugate:	This MCM2 antibody is un-conjugated
Application:	Immunohistochemistry (IHC), ELISA

#### Product Details

Immunogen:	Recombinant protein of human MCM2
Isotype:	IgG
Characteristics:	Polyclonal Antibody
Purification:	Affinity purification

#### Target Details

Target:	MCM2
Alternative Name:	MCM2 ( <a href="#">MCM2 Products</a> )
Background:	<p>The protein encoded by this gene is one of the highly conserved mini-chromosome maintenance proteins (MCM) that are involved in the initiation of eukaryotic genome replication. The hexameric protein complex formed by MCM proteins is a key component of the pre-replication complex (pre_RC) and may be involved in the formation of replication forks and in</p>

## Target Details

---

the recruitment of other DNA replication related proteins. This protein forms a complex with Human, Mouse CM4, 6, and 7, and has been shown to regulate the helicase activity of the complex. This protein is phosphorylated, and thus regulated by, protein kinases CDC2 and CDC7.

UniProt: [P49736](#)

Pathways: [DNA Damage Repair](#), [Mitotic G1-G1/S Phases](#), [DNA Replication](#), [Chromatin Binding](#), [Synthesis of DNA](#)

## Application Details

---

Application Notes: IHC 1:50-1:200

Restrictions: For Research Use only

## Handling

---

Format: Liquid

Concentration: 0.1 mg/mL

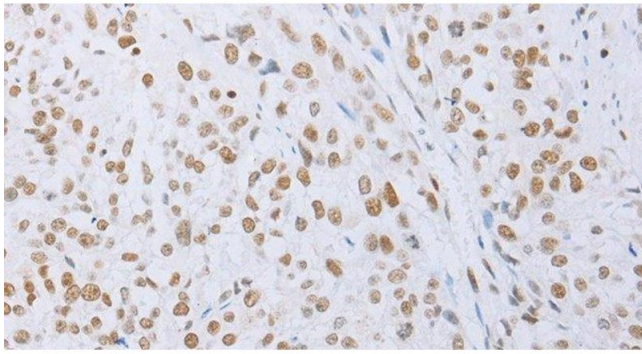
Buffer: PBS with 0.05 % sodium azide and 50 % glycerol, PH7.4

Preservative: Sodium azide

Precaution of Use: This product contains Sodium azide: a POISONOUS AND HAZARDOUS SUBSTANCE which should be handled by trained staff only.

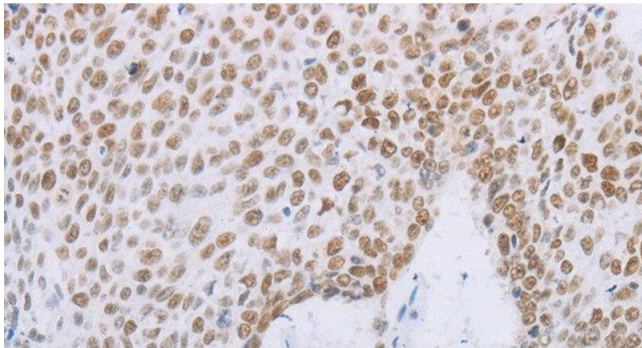
Storage: -20 °C

Storage Comment: Store at -20°C. Avoid freeze / thaw cycles.



#### Immunohistochemistry (Paraffin-embedded Sections)

**Image 1.** Immunohistochemistry of paraffin-embedded Human esophagus cancer tissue using MCM2 Polyclonal Antibody at dilution 1:50



#### Immunohistochemistry (Paraffin-embedded Sections)

**Image 2.** Immunohistochemistry of paraffin-embedded Human lung cancer tissue using MCM2 Polyclonal Antibody at dilution 1:50