



Datasheet for ABIN7240094

anti-RPSA/Laminin Receptor antibody



[Go to Product page](#)

3 Images

Overview

Quantity:	200 µL
Target:	RPSA/Laminin Receptor (RPSA)
Reactivity:	Human, Mouse, Rat
Host:	Rabbit
Clonality:	Polyclonal
Conjugate:	This RPSA/Laminin Receptor antibody is un-conjugated
Application:	Western Blotting (WB), ELISA, Immunohistochemistry (IHC)

Product Details

Immunogen:	Recombinant protein of human RPSA
Isotype:	IgG
Characteristics:	Polyclonal Antibody
Purification:	Affinity purification

Target Details

Target:	RPSA/Laminin Receptor (RPSA)
Alternative Name:	RPSA (RPSA Products)
Background:	Laminins, a family of extracellular matrix glycoproteins, are the major noncollagenous constituent of basement membranes. They have been implicated in a wide variety of biological processes including cell adhesion, differentiation, migration, signaling, neurite outgrowth and metastasis. Many of the effects of laminin are mediated through interactions with cell surface

Target Details

receptors. These receptors include members of the integrin family, as well as non-integrin laminin-binding proteins. This gene encodes a high-affinity, non-integrin family, laminin receptor 1. This receptor has been variously called 67 kD laminin receptor, 37 kD laminin receptor precursor (37LRP) and p40 ribosome-associated protein. The amino acid sequence of laminin receptor 1 is highly conserved through evolution, suggesting a key biological function. It has been observed that the level of the laminin receptor transcript is higher in colon carcinoma tissue and lung cancer cell line than their normal counterparts. Also, there is a correlation between the upregulation of this polypeptide in cancer cells and their invasive and metastatic phenotype. Multiple copies of this gene exist, however, most of them are pseudogenes thought to have arisen from retropositional events. Two alternatively spliced transcript variants encoding the same protein have been found for this gene

Molecular Weight: 33 kDa

UniProt: [P08865](#)

Pathways: [Ribonucleoprotein Complex Subunit Organization](#), [Ribosome Assembly](#)

Application Details

Application Notes: WB 1:500-1:2000, IHC 1:100-1:300

Restrictions: For Research Use only

Handling

Format: Liquid

Concentration: 0.5 mg/mL

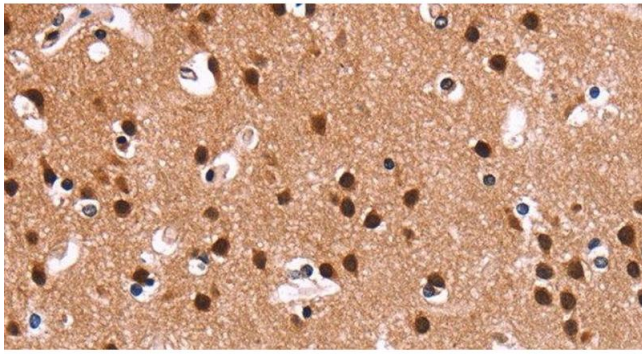
Buffer: PBS with 0.05 % sodium azide and 50 % glycerol, PH7.4

Preservative: Sodium azide

Precaution of Use: This product contains Sodium azide: a POISONOUS AND HAZARDOUS SUBSTANCE which should be handled by trained staff only.

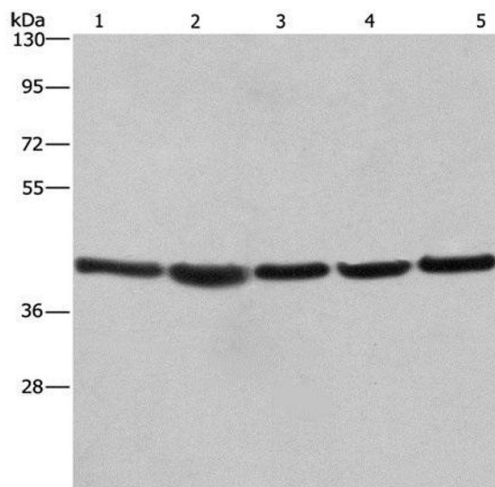
Storage: -20 °C

Storage Comment: Store at -20°C. Avoid freeze / thaw cycles.



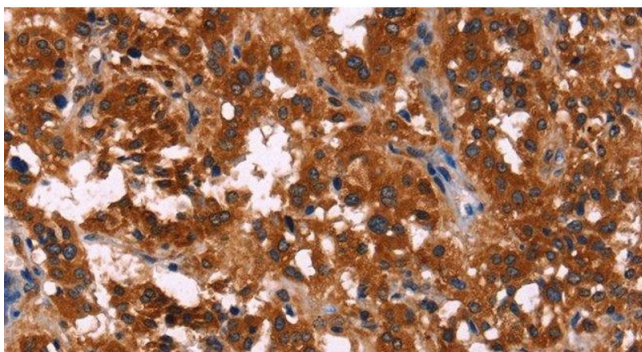
Immunohistochemistry (Paraffin-embedded Sections)

Image 1. Immunohistochemistry of paraffin-embedded Human brain using RPSA Polyclonal Antibody at dilution of 1:60



Western Blotting

Image 2. Western Blot analysis of A549, NIH/3T3 and 293T cell, Human hepatocellular carcinoma tissue and hela cell using RPSA Polyclonal Antibody at dilution of 1:433.3



Immunohistochemistry (Paraffin-embedded Sections)

Image 3. Immunohistochemistry of paraffin-embedded Human thyroid cancer using RPSA Polyclonal Antibody at dilution of 1:60