

Datasheet for ABIN7240265

**anti-SOCS5 antibody****2** Images[Go to Product page](#)

## Overview

Quantity:	200 µL
Target:	SOCS5
Reactivity:	Human, Mouse
Host:	Rabbit
Clonality:	Polyclonal
Conjugate:	This SOCS5 antibody is un-conjugated
Application:	ELISA, Immunohistochemistry (IHC)

## Product Details

Immunogen:	Recombinant protein of human SOCS5
Isotype:	IgG
Characteristics:	Polyclonal Antibody
Purification:	Affinity purification

## Target Details

Target:	SOCS5
Alternative Name:	SOCS5 ( <a href="#">SOCS5 Products</a> )
Background:	The protein encoded by this gene contains a SH2 domain and a SOCS BOX domain. The protein thus belongs to the suppressor of cytokine signaling (SOCS) family, also known as STAT-induced STAT inhibitor (SSI) protein family. SOCS family members are known to be cytokine-inducible negative regulators of cytokine signaling. The specific function of this protein has not

## Target Details

yet been determined. Two alternatively spliced transcript variants encoding an identical protein have been reported.

UniProt: [O75159](#)

Pathways: [JAK-STAT Signaling](#), [EGFR Signaling Pathway](#), [Positive Regulation of Immune Effector Process](#)

## Application Details

Application Notes: IHC 1:50-1:200

Restrictions: For Research Use only

## Handling

Format: Liquid

Concentration: 0.2 mg/mL

Buffer: PBS with 0.05 % sodium azide and 50 % glycerol, PH7.4

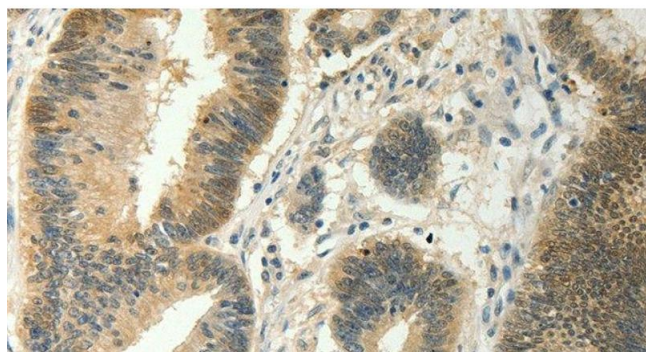
Preservative: Sodium azide

Precaution of Use: This product contains Sodium azide: a POISONOUS AND HAZARDOUS SUBSTANCE which should be handled by trained staff only.

Storage: -20 °C

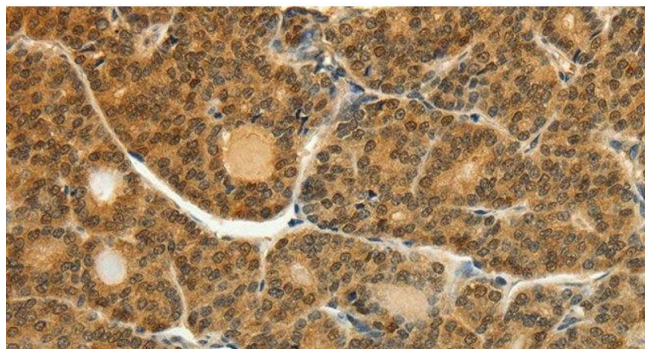
Storage Comment: Store at -20°C. Avoid freeze / thaw cycles.

## Images



### Immunohistochemistry (Paraffin-embedded Sections)

**Image 1.** Immunohistochemistry of paraffin-embedded Human colon cancer tissue using SOCS5 Polyclonal Antibody at dilution 1:35



#### Immunohistochemistry (Paraffin-embedded Sections)

**Image 2.** Immunohistochemistry of paraffin-embedded Human thyroid cancer tissue using SOCS5 Polyclonal Antibody at dilution 1:35