

Datasheet for ABIN7240448

anti-ALG2 antibody**2** Images[Go to Product page](#)

Overview

Quantity:	200 µL
Target:	ALG2
Reactivity:	Human, Mouse
Host:	Rabbit
Clonality:	Polyclonal
Conjugate:	This ALG2 antibody is un-conjugated
Application:	ELISA, Immunohistochemistry (IHC)

Product Details

Immunogen:	Recombinant protein of human ALG2
Isotype:	IgG
Characteristics:	Polyclonal Antibody
Purification:	Affinity purification

Target Details

Target:	ALG2
Alternative Name:	ALG2 (ALG2 Products)
Background:	This gene encodes a member of the glycosyltransferase 1 family. The encoded protein acts as an alpha 1,3 mannosyltransferase, mannosylating Man(2)GlcNAc(2)-dolichol diphosphate and Man(1)GlcNAc(2)-dolichol diphosphate to form Man(3)GlcNAc(2)-dolichol diphosphate. Defects in this gene have been associated with congenital disorder of glycosylation type 1h (CDG-Ih).

Target Details

Alternative splicing results in multiple transcript variants.

UniProt: [Q9H553](#)

Application Details

Application Notes: IHC 1:50-1:200

Restrictions: For Research Use only

Handling

Format: Liquid

Concentration: 0.2 mg/mL

Buffer: PBS with 0.05 % sodium azide and 50 % glycerol, PH7.4

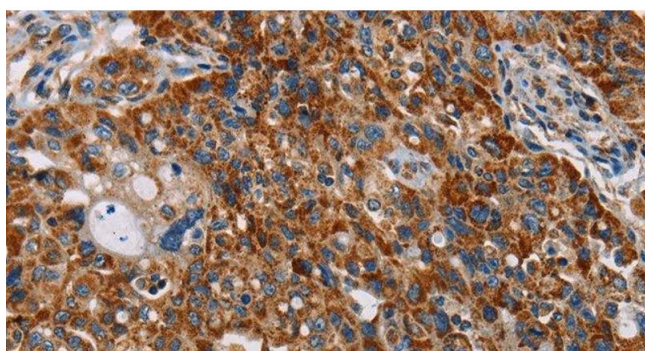
Preservative: Sodium azide

Precaution of Use: This product contains Sodium azide: a POISONOUS AND HAZARDOUS SUBSTANCE which should be handled by trained staff only.

Storage: -20 °C

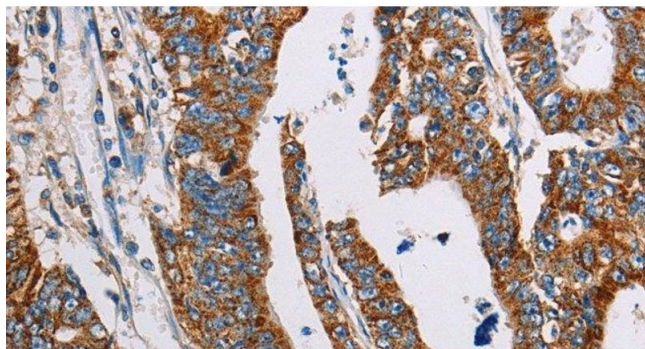
Storage Comment: Store at -20°C. Avoid freeze / thaw cycles.

Images



Immunohistochemistry (Paraffin-embedded Sections)

Image 1. Immunohistochemistry of paraffin-embedded Human lung cancer tissue using ALG2 Polyclonal Antibody at dilution 1:35



Immunohistochemistry (Paraffin-embedded Sections)

Image 2. Immunohistochemistry of paraffin-embedded Human gastric cancer tissue using ALG2 Polyclonal Antibody at dilution 1:35