

Datasheet for ABIN7240481  
**anti-ANGPTL7 antibody**[Go to Product page](#)

## 1 Image

## Overview

Quantity:	200 µL
Target:	ANGPTL7
Reactivity:	Human, Mouse
Host:	Rabbit
Clonality:	Polyclonal
Conjugate:	This ANGPTL7 antibody is un-conjugated
Application:	ELISA, Immunohistochemistry (IHC)

## Product Details

Immunogen:	Recombinant protein of human ANGPTL7
Isotype:	IgG
Characteristics:	Polyclonal Antibody
Purification:	Affinity purification

## Target Details

Target:	ANGPTL7
Alternative Name:	ANGPTL7 ( <a href="#">ANGPTL7 Products</a> )
Background:	Angiopoietin-related protein 7 is a protein that in humans is encoded by the ANGPTL7 gene, a member of the ANGPTL family. Highly and specifically expressed in the cornea where is confined to the stromal layer.

## Target Details

UniProt: [O43827](#)

## Application Details

Application Notes: IHC 1:50-1:200

Restrictions: For Research Use only

## Handling

Format: Liquid

Concentration: 0.4 mg/mL

Buffer: PBS with 0.05 % sodium azide and 50 % glycerol, PH7.4

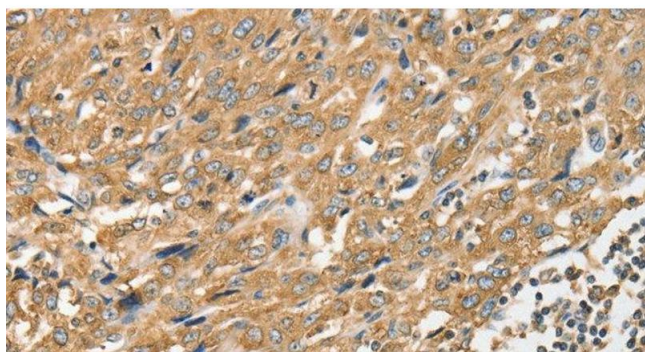
Preservative: Sodium azide

Precaution of Use: This product contains Sodium azide: a POISONOUS AND HAZARDOUS SUBSTANCE which should be handled by trained staff only.

Storage: -20 °C

Storage Comment: Store at -20°C. Avoid freeze / thaw cycles.

## Images



### Immunohistochemistry (Paraffin-embedded Sections)

**Image 1.** Immunohistochemistry of paraffin-embedded Human esophagus cancer tissue using ANGPTL7 Polyclonal Antibody at dilution 1:40