

Datasheet for ABIN7240553  
**anti-ARHGEF7 antibody**



[Go to Product page](#)

3 Images

### Overview

Quantity:	200 µL
Target:	ARHGEF7
Reactivity:	Human, Rat, Mouse
Host:	Rabbit
Clonality:	Polyclonal
Conjugate:	This ARHGEF7 antibody is un-conjugated
Application:	Western Blotting (WB), ELISA, Immunohistochemistry (IHC)

### Product Details

Immunogen:	Recombinant protein of human ARHGEF7
Isotype:	IgG
Characteristics:	Polyclonal Antibody
Purification:	Affinity purification

### Target Details

Target:	ARHGEF7
Alternative Name:	ARHGEF7 ( <a href="#">ARHGEF7 Products</a> )
Background:	Rho GTPases play a fundamental role in numerous cellular processes triggered by extracellular stimuli that work through G protein coupled receptors. The encoded protein belongs to a family of cytoplasmic proteins that activate the Ras-like family of Rho proteins by exchanging bound GDP for GTP. It forms a complex with the small GTP binding protein Rac1 and recruits Rac1 to

## Target Details

---

membrane ruffles and to focal adhesions. This protein can induce membrane ruffling. Multiple alternatively spliced transcript variants encoding different isoforms have been described for this gene.

Molecular Weight: 90 kDa

UniProt: [Q14155](#)

Pathways: [EGFR Signaling Pathway](#), [Neurotrophin Signaling Pathway](#), [EGFR Downregulation](#)

## Application Details

---

Application Notes: WB 1:500-1:2000, IHC 1:50-1:200

Restrictions: For Research Use only

## Handling

---

Format: Liquid

Concentration: 0.2 mg/mL

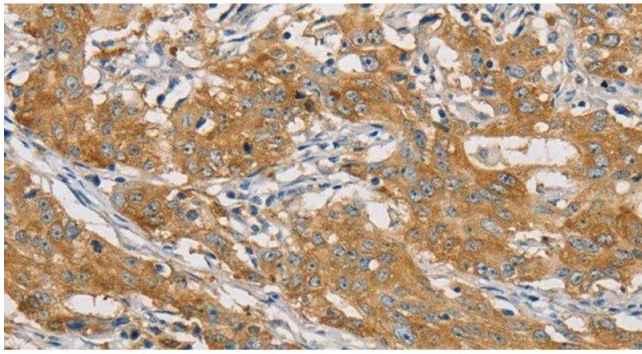
Buffer: PBS with 0.05 % sodium azide and 50 % glycerol, PH7.4

Preservative: Sodium azide

Precaution of Use: This product contains Sodium azide: a POISONOUS AND HAZARDOUS SUBSTANCE which should be handled by trained staff only.

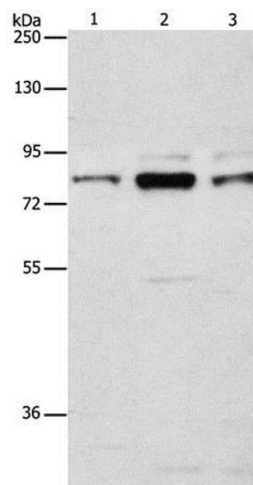
Storage: -20 °C

Storage Comment: Store at -20°C. Avoid freeze / thaw cycles.



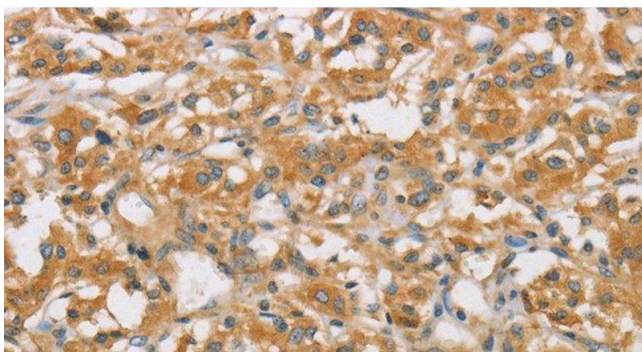
### Immunohistochemistry (Paraffin-embedded Sections)

**Image 1.** Immunohistochemistry of paraffin-embedded Human gastric cancer using ARHGEF7 Polyclonal Antibody at dilution of 1:40



### Western Blotting

**Image 2.** Western Blot analysis of Human brain malignant glioma tissue, A172 and 293T cell using ARHGEF7 Polyclonal Antibody at dilution of 1:800



### Immunohistochemistry (Paraffin-embedded Sections)

**Image 3.** Immunohistochemistry of paraffin-embedded Human thyroid cancer using ARHGEF7 Polyclonal Antibody at dilution of 1:40