

Datasheet for ABIN7240556  
**anti-Arhgef9 antibody**

## 3 Images

[Go to Product page](#)

## Overview

Quantity:	200 µL
Target:	Arhgef9
Reactivity:	Human, Rat, Mouse
Host:	Rabbit
Clonality:	Polyclonal
Conjugate:	This Arhgef9 antibody is un-conjugated
Application:	ELISA, Immunohistochemistry (IHC), Western Blotting (WB)

## Product Details

Immunogen:	Recombinant protein of human ARHGEF9
Isotype:	IgG
Characteristics:	Polyclonal Antibody
Purification:	Affinity purification

## Target Details

Target:	Arhgef9
Alternative Name:	ARHGEF9 ( <a href="#">Arhgef9 Products</a> )
Background:	The protein encoded by this gene is a Rho-like GTPase that switches between the active (GTP-bound) state and inactive (GDP-bound) state to regulate CDC42 and other genes. Defects in this gene are a cause of startle disease with epilepsy (STHEE), also known as hyperekplexia with epilepsy. Three transcript variants encoding different isoforms have been found for this gene.

## Target Details

Molecular Weight:	61 kDa
UniProt:	<a href="#">O43307</a>
Pathways:	<a href="#">Neurotrophin Signaling Pathway</a>

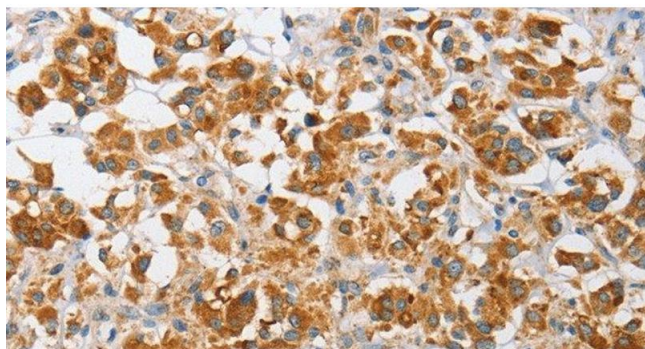
## Application Details

Application Notes:	WB 1:1000-1:5000, IHC 1:50-1:200
Restrictions:	For Research Use only

## Handling

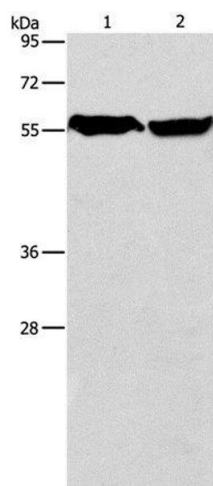
Format:	Liquid
Concentration:	0.4 mg/mL
Buffer:	PBS with 0.05 % sodium azide and 50 % glycerol, PH7.4
Preservative:	Sodium azide
Precaution of Use:	This product contains Sodium azide: a POISONOUS AND HAZARDOUS SUBSTANCE which should be handled by trained staff only.
Storage:	-20 °C
Storage Comment:	Store at -20°C. Avoid freeze / thaw cycles.

## Images



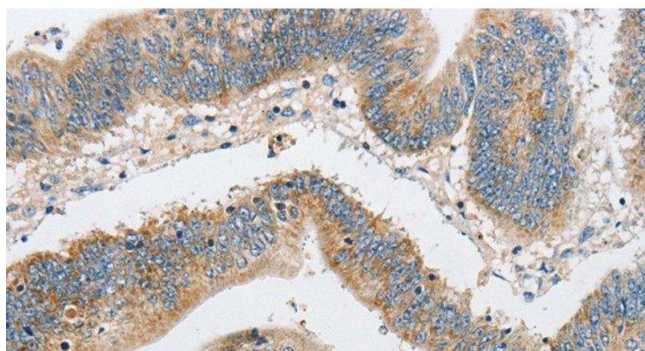
### Immunohistochemistry (Paraffin-embedded Sections)

**Image 1.** Immunohistochemistry of paraffin-embedded Human thyroid cancer using ARHGEF9 Polyclonal Antibody at dilution of 1:50



### Western Blotting

**Image 2.** Western Blot analysis of Mouse heart and Human fetal brain tissue using ARHGEF9 Polyclonal Antibody at dilution of 1:950



### Immunohistochemistry (Paraffin-embedded Sections)

**Image 3.** Immunohistochemistry of paraffin-embedded Human colon cancer using ARHGEF9 Polyclonal Antibody at dilution of 1:50