

Datasheet for ABIN7240670

anti-MARK1 antibody[Go to Product page](#)**1** Image

Overview

Quantity:	200 µL
Target:	MARK1
Reactivity:	Human, Mouse, Rat
Host:	Rabbit
Clonality:	Polyclonal
Conjugate:	This MARK1 antibody is un-conjugated
Application:	Western Blotting (WB), ELISA

Product Details

Immunogen:	Recombinant protein of human MARK1
Isotype:	IgG
Characteristics:	Polyclonal Antibody
Purification:	Affinity purification

Target Details

Target:	MARK1
Alternative Name:	MARK1 (MARK1 Products)
Background:	MAP/microtubule affinity-regulating kinase 1 (MARK1) is a 795 amino acid protein belonging to the CAMK Ser/Thr protein kinase family. MARK1 is thought to play a role in the stability of the microtubule matrix of the cytoskeleton. MARK1 is activated by phosphorylation of Thr215 by LKB1 in complex with STRAD and MO25. Localized to the cytoskeleton, MARK1 contains one

Target Details

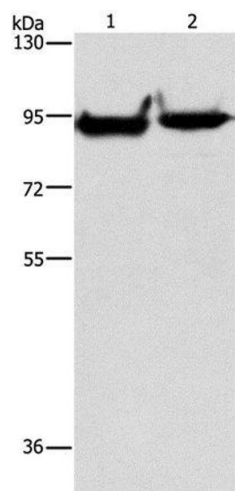
	kinase-associated (KA1) domain, one protein kinase domain and one UBA domain. Expressed as three isoforms produced by alternative splicing, MARK1 is found with highest levels in brain, skeletal muscle and heart.
Molecular Weight:	89 kDa
UniProt:	Q9P0L2
Pathways:	SARS-CoV-2 Protein Interactome , The Global Phosphorylation Landscape of SARS-CoV-2 Infection

Application Details

Application Notes:	WB 1:500-1:2000
Restrictions:	For Research Use only

Handling

Format:	Liquid
Concentration:	0.3 mg/mL
Buffer:	PBS with 0.05 % sodium azide and 50 % glycerol, PH7.4
Preservative:	Sodium azide
Precaution of Use:	This product contains Sodium azide: a POISONOUS AND HAZARDOUS SUBSTANCE which should be handled by trained staff only.
Storage:	-20 °C
Storage Comment:	Store at -20°C. Avoid freeze / thaw cycles.



Western Blotting

Image 1. Western Blot analysis of Mouse heart and brain tissue using MARK1 Polyclonal Antibody at dilution of 1:500