



[Go to Product page](#)

Datasheet for ABIN7240679

anti-TWF2 antibody

2 Images

Overview

Quantity:	200 µL
Target:	TWF2
Reactivity:	Human, Mouse
Host:	Rabbit
Clonality:	Polyclonal
Conjugate:	This TWF2 antibody is un-conjugated
Application:	Western Blotting (WB), Immunohistochemistry (IHC), ELISA

Product Details

Immunogen:	Recombinant protein of human TWF2
Isotype:	IgG
Characteristics:	Polyclonal Antibody
Purification:	Affinity purification

Target Details

Target:	TWF2
Alternative Name:	TWF2 (TWF2 Products)
Background:	The protein encoded by this gene was identified by its interaction with the catalytic domain of protein kinase C-zeta. The encoded protein contains an actin-binding site and an ATP-binding site. It is most closely related to twinfilin (PTK9), a conserved actin monomer-binding protein.

Target Details

Molecular Weight:	40 kDa
UniProt:	Q6IBS0
Pathways:	Regulation of Actin Filament Polymerization , Regulation of Cell Size , Maintenance of Protein Location , Toll-Like Receptors Cascades

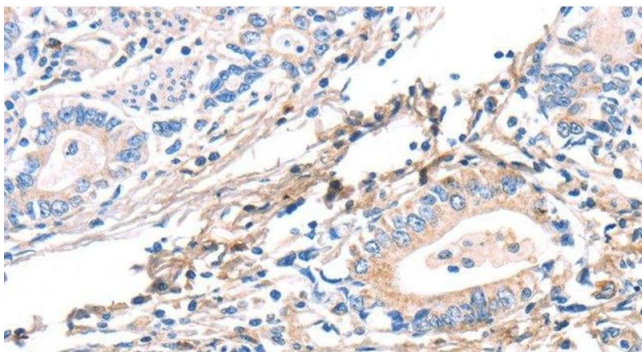
Application Details

Application Notes:	WB 1:500-1:2000, IHC 1:25-1:100
Restrictions:	For Research Use only

Handling

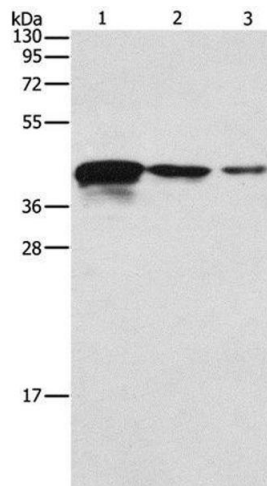
Format:	Liquid
Concentration:	0.3 mg/mL
Buffer:	PBS with 0.05 % sodium azide and 50 % glycerol, PH7.4
Preservative:	Sodium azide
Precaution of Use:	This product contains Sodium azide: a POISONOUS AND HAZARDOUS SUBSTANCE which should be handled by trained staff only.
Storage:	-20 °C
Storage Comment:	Store at -20°C. Avoid freeze / thaw cycles.

Images



Immunohistochemistry (Paraffin-embedded Sections)

Image 1. Immunohistochemistry of paraffin-embedded Human gastric cancer using TWF2 Polyclonal Antibody at dilution of 1:40



Western Blotting

Image 2. Western Blot analysis of Human endometrial carcinoma tissue, A172 and U937 cell using TWF2 Polyclonal Antibody at dilution of 1:800