

Datasheet for ABIN7240820

anti-ASF1A antibody[Go to Product page](#)**1** Image

Overview

Quantity:	200 µL
Target:	ASF1A
Reactivity:	Human, Mouse
Host:	Rabbit
Clonality:	Polyclonal
Conjugate:	This ASF1A antibody is un-conjugated
Application:	Western Blotting (WB), ELISA

Product Details

Immunogen:	Recombinant protein of human ASF1A
Isotype:	IgG
Characteristics:	Polyclonal Antibody
Purification:	Affinity purification

Target Details

Target:	ASF1A
Alternative Name:	ASF1A (ASF1A Products)
Background:	This gene encodes a member of the H3/H4 family of histone chaperone proteins and is similar to the anti-silencing function-1 gene in yeast. The protein is a key component of a histone donor complex that functions in nucleosome assembly. It interacts with histones H3 and H4, and functions together with a chromatin assembly factor during DNA replication and repair.

Target Details

Molecular Weight:	23 kDa
UniProt:	Q9Y294

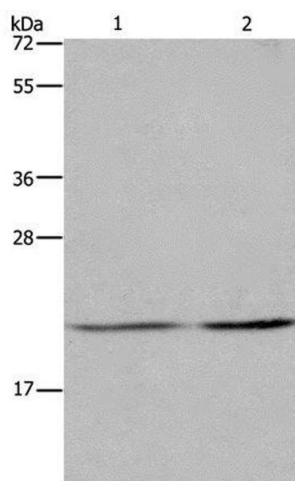
Application Details

Application Notes:	WB 1:1000-1:5000
Restrictions:	For Research Use only

Handling

Format:	Liquid
Concentration:	0.7 mg/mL
Buffer:	PBS with 0.05 % sodium azide and 50 % glycerol, PH7.4
Preservative:	Sodium azide
Precaution of Use:	This product contains Sodium azide: a POISONOUS AND HAZARDOUS SUBSTANCE which should be handled by trained staff only.
Storage:	-20 °C
Storage Comment:	Store at -20°C. Avoid freeze / thaw cycles.

Images



Western Blotting

Image 1. Western Blot analysis of A549 and Hela cell using ASF1A Polyclonal Antibody at dilution of 1:1200