

Datasheet for ABIN7240841  
**anti-alpha Actinin 4 antibody**

3 Images

[Go to Product page](#)

## Overview

Quantity:	200 µL
Target:	alpha Actinin 4 (ACTN4)
Reactivity:	Human, Mouse, Rat
Host:	Rabbit
Clonality:	Polyclonal
Conjugate:	This alpha Actinin 4 antibody is un-conjugated
Application:	Western Blotting (WB), ELISA, Immunohistochemistry (IHC)

## Product Details

Immunogen:	Recombinant protein of human ACTN4
Isotype:	IgG
Characteristics:	Polyclonal Antibody
Purification:	Affinity purification

## Target Details

Target:	alpha Actinin 4 (ACTN4)
Alternative Name:	ACTN4 ( <a href="#">ACTN4 Products</a> )
Background:	Alpha actinins belong to the spectrin gene superfamily which represents a diverse group of cytoskeletal proteins, including the alpha and beta spectrins and dystrophins. Alpha actinin is an actin-binding protein with multiple roles in different cell types. In nonmuscle cells, the cytoskeletal isoform is found along microfilament bundles and adherens-type junctions, where

## Target Details

it is involved in binding actin to the membrane. In contrast, skeletal, cardiac, and smooth muscle isoforms are localized to the Z-disc and analogous dense bodies, where they help anchor the myofibrillar actin filaments. This gene encodes a nonmuscle, alpha actinin isoform which is concentrated in the cytoplasm, and thought to be involved in metastatic processes.

Molecular Weight: 105 kDa

UniProt: [O43707](#)

Pathways: [Proton Transport](#)

## Application Details

Application Notes: WB 1:500-1:2000, IHC 1:50-1:200

Restrictions: For Research Use only

## Handling

Format: Liquid

Concentration: 0.8 mg/mL

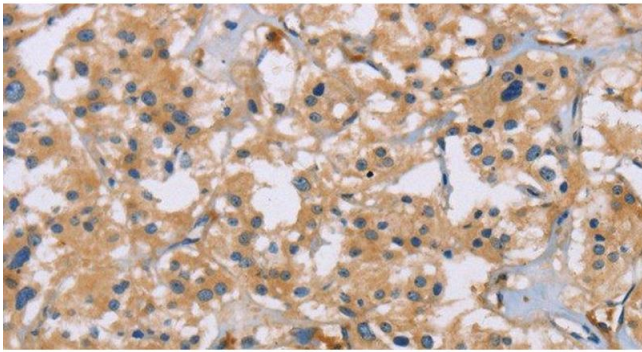
Buffer: PBS with 0.05 % sodium azide and 50 % glycerol, PH7.4

Preservative: Sodium azide

Precaution of Use: This product contains Sodium azide: a POISONOUS AND HAZARDOUS SUBSTANCE which should be handled by trained staff only.

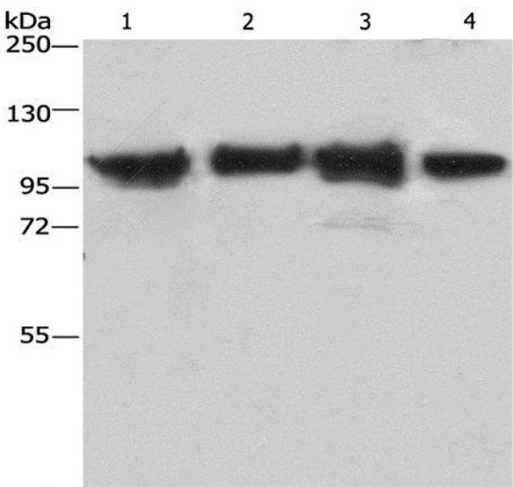
Storage: -20 °C

Storage Comment: Store at -20°C. Avoid freeze / thaw cycles.



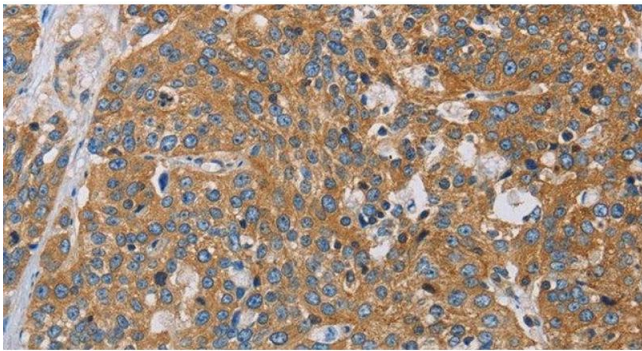
**Immunohistochemistry (Paraffin-embedded Sections)**

**Image 1.** Immunohistochemistry of paraffin-embedded Human thyroid cancer using ACTN4 Polyclonal Antibody at dilution of 1:60



**Western Blotting**

**Image 2.** Western Blot analysis of Lovo cell and Mouse kidney tissue, 231 and hepG2 cell using ACTN4 Polyclonal Antibody at dilution of 1:485



**Immunohistochemistry (Paraffin-embedded Sections)**

**Image 3.** Immunohistochemistry of paraffin-embedded Human esophagus cancer using ACTN4 Polyclonal Antibody at dilution of 1:60