

Datasheet for ABIN7240871

**anti-TP53BP2 antibody**

3 Images

[Go to Product page](#)

## Overview

Quantity:	200 µL
Target:	TP53BP2
Reactivity:	Human, Mouse
Host:	Rabbit
Clonality:	Polyclonal
Conjugate:	This TP53BP2 antibody is un-conjugated
Application:	Western Blotting (WB), ELISA, Immunohistochemistry (IHC)

## Product Details

Immunogen:	Recombinant protein of human TP53BP2
Isotype:	IgG
Characteristics:	Polyclonal Antibody
Purification:	Affinity purification

## Target Details

Target:	TP53BP2
Alternative Name:	TP53BP2 ( <a href="#">TP53BP2 Products</a> )
Background:	This gene encodes a member of the ASPP (apoptosis-stimulating protein of p53) family of p53 interacting proteins. The protein contains four ankyrin repeats and an SH3 domain involved in protein-protein interactions. It is localized to the perinuclear region of the cytoplasm, and regulates apoptosis and cell growth through interactions with other regulatory molecules

## Target Details

including members of the p53 family. Multiple transcript variants encoding different isoforms have been found for this gene.

Molecular Weight: 126 kDa

UniProt: [Q13625](#)

## Application Details

Application Notes: WB 1:500-1:2000, IHC 1:50-1:200

Restrictions: For Research Use only

## Handling

Format: Liquid

Concentration: 0.5 mg/mL

Buffer: PBS with 0.05 % sodium azide and 50 % glycerol, PH7.4

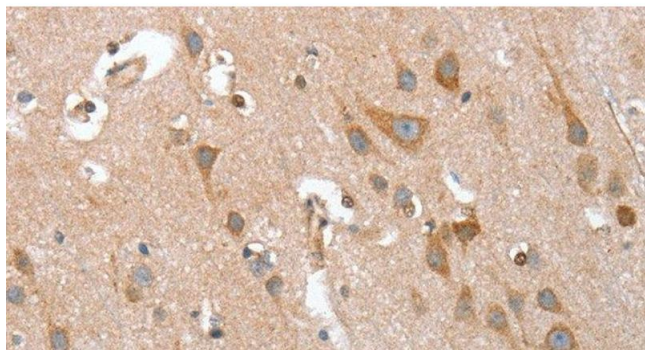
Preservative: Sodium azide

Precaution of Use: This product contains Sodium azide: a POISONOUS AND HAZARDOUS SUBSTANCE which should be handled by trained staff only.

Storage: -20 °C

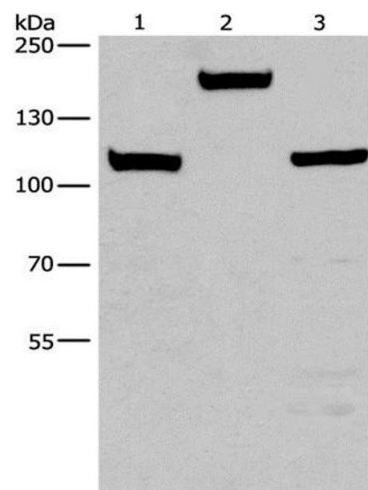
Storage Comment: Store at -20°C. Avoid freeze / thaw cycles.

## Images



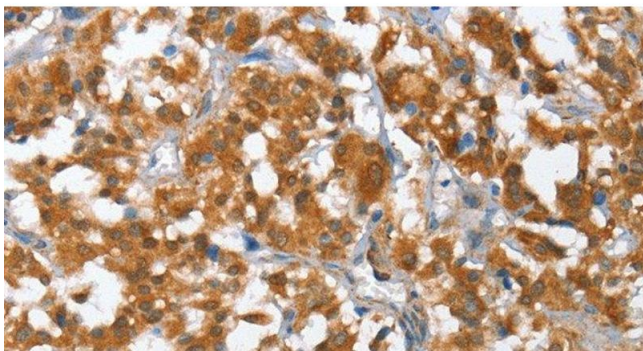
### Immunohistochemistry (Paraffin-embedded Sections)

**Image 1.** Immunohistochemistry of paraffin-embedded Human brain using TP53BP2 Polyclonal Antibody at dilution of 1:35



### Western Blotting

**Image 2.** Western Blot analysis of Mouse kidney tissue, 293T and 231 cell using TP53BP2 Polyclonal Antibody at dilution of 1:375



### Immunohistochemistry (Paraffin-embedded Sections)

**Image 3.** Immunohistochemistry of paraffin-embedded Human thyroid cancer using TP53BP2 Polyclonal Antibody at dilution of 1:35