

Datasheet for ABIN7240940

anti-CALU antibody

3 Images

[Go to Product page](#)

Overview

Quantity:	200 µL
Target:	CALU
Reactivity:	Human, Mouse, Rat
Host:	Rabbit
Clonality:	Polyclonal
Conjugate:	This CALU antibody is un-conjugated
Application:	Western Blotting (WB), Immunohistochemistry (IHC), ELISA

Product Details

Immunogen:	Recombinant protein of human CALU
Isotype:	IgG
Characteristics:	Polyclonal Antibody
Purification:	Affinity purification

Target Details

Target:	CALU
Alternative Name:	CALU (CALU Products)
Background:	The product of this gene is a calcium-binding protein localized in the endoplasmic reticulum (ER) and it is involved in such ER functions as protein folding and sorting. This protein belongs to a family of multiple EF-hand proteins (CERC) that include reticulocalbin, ERC-55, and Cab45 and the product of this gene. Alternatively spliced transcript variants encoding different

Target Details

isoforms have been identified

Molecular Weight: 37 kDa

UniProt: [O43852](#)

Application Details

Application Notes: WB 1:500-1:2000, IHC 1:100-1:300

Restrictions: For Research Use only

Handling

Format: Liquid

Concentration: 0.4 mg/mL

Buffer: PBS with 0.05 % sodium azide and 50 % glycerol, PH7.4

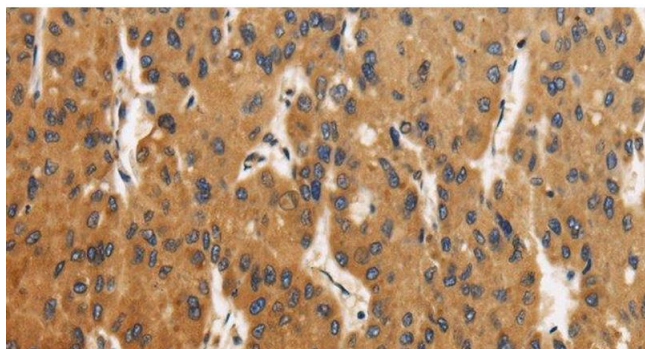
Preservative: Sodium azide

Precaution of Use: This product contains Sodium azide: a POISONOUS AND HAZARDOUS SUBSTANCE which should be handled by trained staff only.

Storage: -20 °C

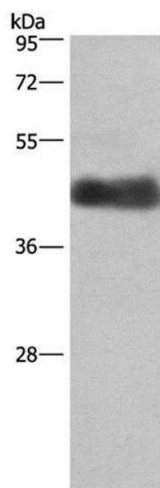
Storage Comment: Store at -20°C. Avoid freeze / thaw cycles.

Images



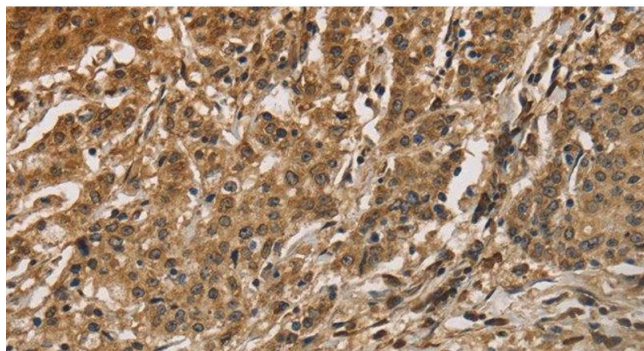
Immunohistochemistry (Paraffin-embedded Sections)

Image 1. Immunohistochemistry of paraffin-embedded Human liver cancer using CALU Polyclonal Antibody at dilution of 1:40



Western Blotting

Image 2. Western Blot analysis of Human placenta tissue using CALU Polyclonal Antibody at dilution of 1:400



Immunohistochemistry (Paraffin-embedded Sections)

Image 3. Immunohistochemistry of paraffin-embedded Human gastric cancer using CALU Polyclonal Antibody at dilution of 1:40