

Datasheet for ABIN7240958

**anti-CARD14 antibody****2** Images[Go to Product page](#)

## Overview

Quantity:	200 µL
Target:	CARD14
Reactivity:	Human, Mouse
Host:	Rabbit
Clonality:	Polyclonal
Conjugate:	This CARD14 antibody is un-conjugated
Application:	ELISA, Western Blotting (WB), Immunohistochemistry (IHC)

## Product Details

Immunogen:	Recombinant protein of human CARD14
Isotype:	IgG
Characteristics:	Polyclonal Antibody
Purification:	Affinity purification

## Target Details

Target:	CARD14
Alternative Name:	CARD14 ( <a href="#">CARD14 Products</a> )
Background:	This gene encodes a caspase recruitment domain-containing protein that is a member of the membrane-associated guanylate kinase (MAGUK) family of proteins. Members of this protein family are scaffold proteins that are involved in a diverse array of cellular processes including cellular adhesion, signal transduction and cell polarity control. This protein has been shown to

## Target Details

specifically interact with BCL10, a protein known to function as a positive regulator of cell apoptosis and NF-kappaB activation. Alternate splicing results in multiple transcript variants.

Molecular Weight: 113 kDa

UniProt: [Q9BXL6](#)

## Application Details

Application Notes: WB 1:200-1:1000, IHC 1:25-1:100

Restrictions: For Research Use only

## Handling

Format: Liquid

Concentration: 0.4 mg/mL

Buffer: PBS with 0.05 % sodium azide and 50 % glycerol, PH7.4

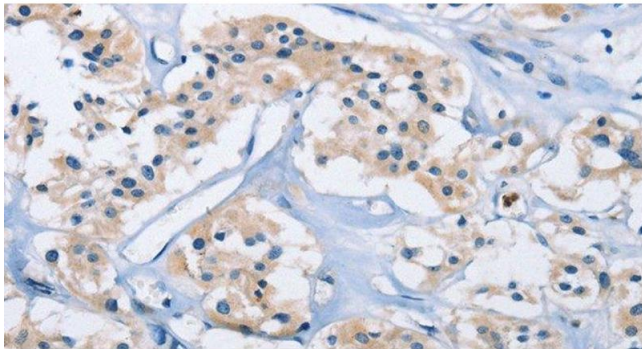
Preservative: Sodium azide

Precaution of Use: This product contains Sodium azide: a POISONOUS AND HAZARDOUS SUBSTANCE which should be handled by trained staff only.

Storage: -20 °C

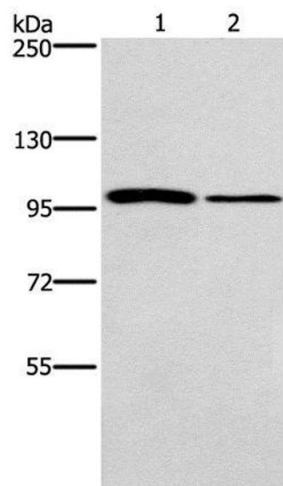
Storage Comment: Store at -20°C. Avoid freeze / thaw cycles.

## Images



### Immunohistochemistry (Paraffin-embedded Sections)

**Image 1.** Immunohistochemistry of paraffin-embedded Human thyroid cancer using CARD14 Polyclonal Antibody at dilution of 1:30



Western Blotting

**Image 2.** Western Blot analysis of NIH/3T3 and A172 cell using CARD14 Polyclonal Antibody at dilution of 1:800