



[Go to Product page](#)

Datasheet for ABIN7241024
anti-CHMP1A antibody

3 Images

Overview

Quantity:	200 µL
Target:	CHMP1A
Reactivity:	Human, Mouse
Host:	Rabbit
Clonality:	Polyclonal
Conjugate:	This CHMP1A antibody is un-conjugated
Application:	ELISA, Western Blotting (WB), Immunohistochemistry (IHC)

Product Details

Immunogen:	Recombinant protein of human CHMP1A
Isotype:	IgG
Characteristics:	Polyclonal Antibody
Purification:	Affinity purification

Target Details

Target:	CHMP1A
Alternative Name:	CHMP1A (CHMP1A Products)
Background:	This gene encodes a member of the CHMP/Chmp family of proteins which are involved in multivesicular body sorting of proteins to the interiors of lysosomes. The initial prediction of the protein sequence encoded by this gene suggested that the encoded protein was a metallopeptidase. The nomenclature has been updated recently to reflect the correct biological

Target Details

function of this encoded protein. Several transcripts encoding different isoforms have been found for this gene.

Molecular Weight: 22 kDa

UniProt: [Q9HD42](#)

Application Details

Application Notes: WB 1:500-1:2000, IHC 1:50-1:200

Restrictions: For Research Use only

Handling

Format: Liquid

Concentration: 0.4 mg/mL

Buffer: PBS with 0.05 % sodium azide and 50 % glycerol, PH7.4

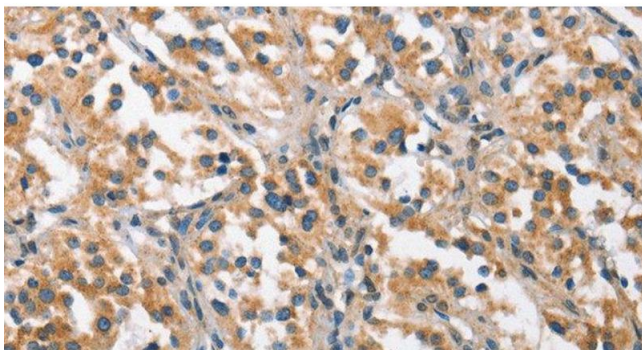
Preservative: Sodium azide

Precaution of Use: This product contains Sodium azide: a POISONOUS AND HAZARDOUS SUBSTANCE which should be handled by trained staff only.

Storage: -20 °C

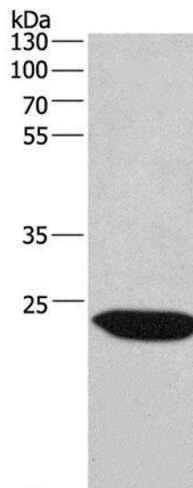
Storage Comment: Store at -20°C. Avoid freeze / thaw cycles.

Images



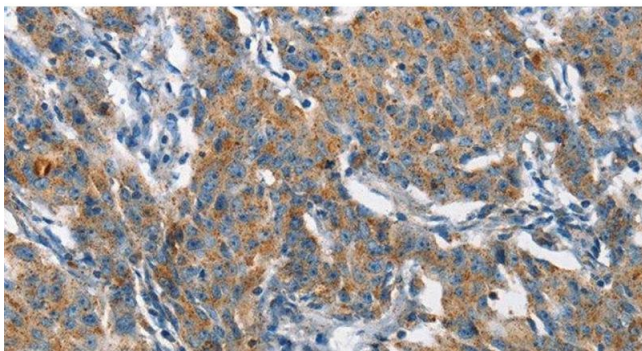
Immunohistochemistry (Paraffin-embedded Sections)

Image 1. Immunohistochemistry of paraffin-embedded Human thyroid cancer using CHMP1A Polyclonal Antibody at dilution of 1:60



Western Blotting

Image 2. Western Blot analysis of Mouse lung tissue using CHMP1A Polyclonal Antibody at dilution of 1:530



Immunohistochemistry (Paraffin-embedded Sections)

Image 3. Immunohistochemistry of paraffin-embedded Human gastric cancer using CHMP1A Polyclonal Antibody at dilution of 1:60