

Datasheet for ABIN7241039
anti-KIAA1524 antibody[Go to Product page](#)

1 Image

Overview

Quantity:	200 µL
Target:	KIAA1524
Reactivity:	Human, Mouse
Host:	Rabbit
Clonality:	Polyclonal
Conjugate:	This KIAA1524 antibody is un-conjugated
Application:	Western Blotting (WB), ELISA

Product Details

Immunogen:	Recombinant protein of human KIAA1524
Isotype:	IgG
Characteristics:	Polyclonal Antibody
Purification:	Affinity purification

Target Details

Target:	KIAA1524
Alternative Name:	KIAA1524 (KIAA1524 Products)
Background:	<p>Protein CIP2A also known as cancerous inhibitor of PP2A (CIP2A) is a protein that in humans is encoded by the KIAA1524 gene. Protein phosphatase 2A (PP2A) is a cellular tumor suppressor which inhibits cell proliferation and transformation of normal cells to malignant cancer cells. Inhibition of PP2A activity is a prerequisite for human cell transformation. However, the in vivo</p>

Target Details

	mechanisms by which PP2A activity is inhibited in spontaneously transformed human cancer cells have been unclear.
Molecular Weight:	102 kDa
UniProt:	Q8TCG1

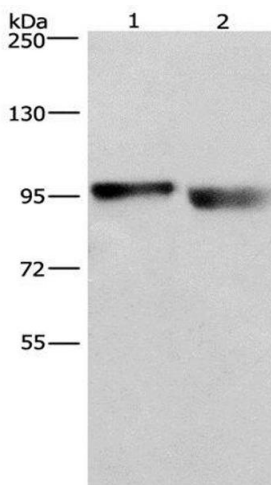
Application Details

Application Notes:	WB 1:500-1:2000
Restrictions:	For Research Use only

Handling

Format:	Liquid
Concentration:	0.5 mg/mL
Buffer:	PBS with 0.05 % sodium azide and 50 % glycerol, PH7.4
Preservative:	Sodium azide
Precaution of Use:	This product contains Sodium azide: a POISONOUS AND HAZARDOUS SUBSTANCE which should be handled by trained staff only.
Storage:	-20 °C
Storage Comment:	Store at -20°C. Avoid freeze / thaw cycles.

Images



Western Blotting

Image 1. Western Blot analysis of A431 and Iovo cell using KIAA1524 Polyclonal Antibody at dilution of 1:597