

Datasheet for ABIN7241177

anti-CCAR1 antibody**2** Images[Go to Product page](#)

Overview

Quantity:	200 µL
Target:	CCAR1
Reactivity:	Human, Mouse
Host:	Rabbit
Clonality:	Polyclonal
Conjugate:	This CCAR1 antibody is un-conjugated
Application:	ELISA, Immunohistochemistry (IHC)

Product Details

Immunogen:	Recombinant protein of human CCAR1
Isotype:	IgG
Characteristics:	Polyclonal Antibody
Purification:	Affinity purification

Target Details

Target:	CCAR1
Alternative Name:	CCAR1 (CCAR1 Products)
Background:	Cell division cycle and apoptosis regulator protein 1 is a protein that in humans is encoded by the CCAR1 gene. The deduced 1,150-amino acid CARP1 protein contains a putative cold-shock protein domain expected to bind RNA and a putative DNA-binding motif predicted to be involved in chromosomal organization. Immunohistochemical analysis detected CARP1 in the

Target Details

perinuclear compartment of human breast cancer cells, and the protein had an apparent molecular mass of 130 kD by SDS-PAGE.

UniProt: [Q8IX12](#)

Application Details

Application Notes: IHC 1:50-1:200

Restrictions: For Research Use only

Handling

Format: Liquid

Concentration: 0.7 mg/mL

Buffer: PBS with 0.05 % sodium azide and 50 % glycerol, PH7.4

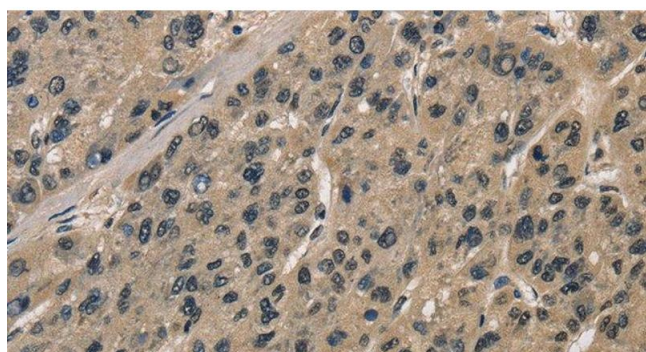
Preservative: Sodium azide

Precaution of Use: This product contains Sodium azide: a POISONOUS AND HAZARDOUS SUBSTANCE which should be handled by trained staff only.

Storage: -20 °C

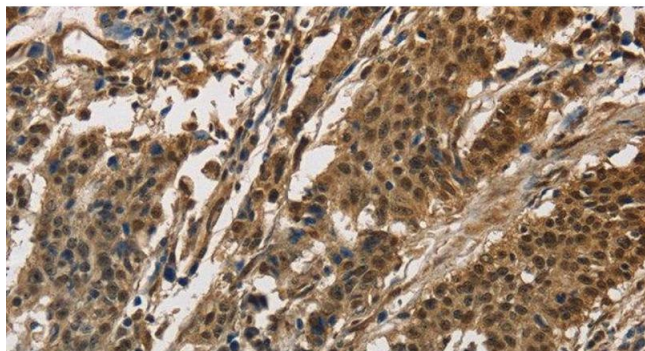
Storage Comment: Store at -20°C. Avoid freeze / thaw cycles.

Images



Immunohistochemistry (Paraffin-embedded Sections)

Image 1. Immunohistochemistry of paraffin-embedded Human liver cancer tissue using CCAR1 Polyclonal Antibody at dilution 1:40



Immunohistochemistry (Paraffin-embedded Sections)

Image 2. Immunohistochemistry of paraffin-embedded Human gastric cancer tissue using CCAR1 Polyclonal Antibody at dilution 1:40