

Datasheet for ABIN7241186

anti-DLX4 antibody[Go to Product page](#)**1** Image

Overview

Quantity:	200 µL
Target:	DLX4
Reactivity:	Human, Mouse
Host:	Rabbit
Clonality:	Polyclonal
Conjugate:	This DLX4 antibody is un-conjugated
Application:	Western Blotting (WB), ELISA

Product Details

Immunogen:	Recombinant protein of human DLX4
Isotype:	IgG
Characteristics:	Polyclonal Antibody
Purification:	Affinity purification

Target Details

Target:	DLX4
Alternative Name:	DLX4 (DLX4 Products)
Background:	Many vertebrate homeo box-containing genes have been identified on the basis of their sequence similarity with Drosophila developmental genes. Members of the Dlx gene family contain a homeobox that is related to that of Distal-less (Dll), a gene expressed in the head and limbs of the developing fruit fly. The Distal-less (Dlx) family of genes comprises at least 6

Target Details

different members, DLX1-DLX6. The DLX proteins are postulated to play a role in forebrain and craniofacial development. Three transcript variants have been described for this gene, however, the full length nature of one variant has not been described. Studies of the two splice variants revealed that one encoded isoform functions as a repressor of the beta-globin gene while the other isoform lacks that function.

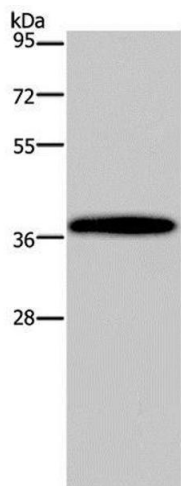
Molecular Weight:	26 kDa
UniProt:	Q92988

Application Details

Application Notes:	WB 1:1000-1:5000
Restrictions:	For Research Use only

Handling

Format:	Liquid
Concentration:	0.2 mg/mL
Buffer:	PBS with 0.05 % sodium azide and 50 % glycerol, PH7.4
Preservative:	Sodium azide
Precaution of Use:	This product contains Sodium azide: a POISONOUS AND HAZARDOUS SUBSTANCE which should be handled by trained staff only.
Storage:	-20 °C
Storage Comment:	Store at -20°C. Avoid freeze / thaw cycles.



Western Blotting

Image 1. Western Blot analysis of Mouse brain tissue using DLX4 Polyclonal Antibody at dilution of 1:900