



[Go to Product page](#)

Datasheet for ABIN7241315
anti-Fc gamma RII (CD32) antibody

3 Images

Overview

Quantity:	200 µL
Target:	Fc gamma RII (CD32)
Reactivity:	Human
Host:	Rabbit
Clonality:	Polyclonal
Conjugate:	Un-conjugated
Application:	Western Blotting (WB), Immunohistochemistry (IHC), ELISA

Product Details

Immunogen:	Recombinant protein of human FCGR2B
Isotype:	IgG
Characteristics:	Polyclonal Antibody
Purification:	Affinity purification

Target Details

Target:	Fc gamma RII (CD32)
Alternative Name:	CD32 (CD32 Products)
Background:	The protein encoded by this gene is a low affinity receptor for the Fc region of immunoglobulin gamma complexes. The encoded protein is involved in the phagocytosis of immune complexes and in the regulation of antibody production by B-cells. Variations in this gene may increase susceptibility to systemic lupus erythematosus (SLE). Several transcript variants encoding

Target Details

different isoforms have been found for this gene.

Molecular Weight: 34 kDa

UniProt: [P31994](#)

Application Details

Application Notes: WB 1:500-1:2000, IHC 1:50-1:200

Restrictions: For Research Use only

Handling

Format: Liquid

Concentration: 0.6 mg/mL

Buffer: PBS with 0.05 % sodium azide and 50 % glycerol, PH7.4

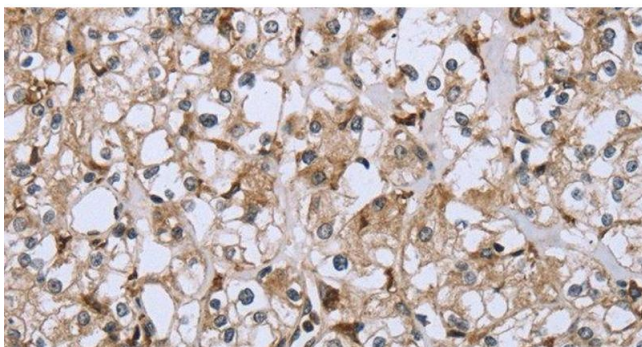
Preservative: Sodium azide

Precaution of Use: This product contains Sodium azide: a POISONOUS AND HAZARDOUS SUBSTANCE which should be handled by trained staff only.

Storage: -20 °C

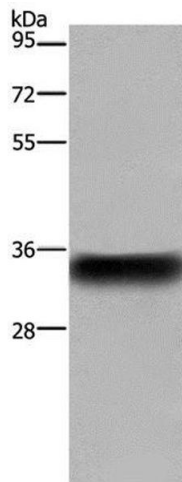
Storage Comment: Store at -20°C. Avoid freeze / thaw cycles.

Images



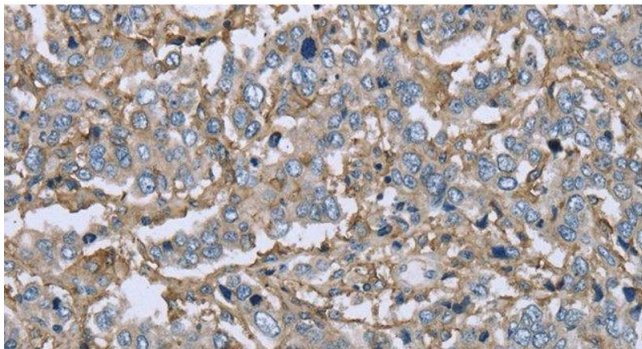
Immunohistochemistry (Paraffin-embedded Sections)

Image 1. Immunohistochemistry of paraffin-embedded Human prostate cancer using CD32 Polyclonal Antibody at dilution of 1:40



Western Blotting

Image 2. Western Blot analysis of Human placenta tissue using CD32 Polyclonal Antibody at dilution of 1:850



Immunohistochemistry (Paraffin-embedded Sections)

Image 3. Immunohistochemistry of paraffin-embedded Human liver cancer using CD32 Polyclonal Antibody at dilution of 1:40