

Datasheet for ABIN7241330
anti-FGFR10P antibody

3 Images

[Go to Product page](#)

Overview

Quantity:	200 µL
Target:	FGFR10P
Reactivity:	Human, Mouse
Host:	Rabbit
Clonality:	Polyclonal
Conjugate:	This FGFR10P antibody is un-conjugated
Application:	Western Blotting (WB), Immunohistochemistry (IHC), ELISA

Product Details

Immunogen:	Recombinant protein of human FGFR10P
Isotype:	IgG
Characteristics:	Polyclonal Antibody
Purification:	Affinity purification

Target Details

Target:	FGFR10P
Alternative Name:	FGFR10P (FGFR10P Products)
Background:	This gene encodes a largely hydrophilic centrosomal protein that is required for anchoring microtubules to subcellular structures. A t(6,8)(q27,p11) chromosomal translocation, fusing this gene and the fibroblast growth factor receptor 1 (FGFR1) gene, has been found in cases of myeloproliferative disorder. The resulting chimeric protein contains the N-terminal leucine-rich

Target Details

region of this encoded protein fused to the catalytic domain of FGFR1. Alterations in this gene may also be associated with Crohn's disease, Graves' disease, and vitiligo. Alternatively spliced transcript variants that encode different proteins have been identified.

Molecular Weight: 43 kDa

UniProt: [O95684](#)

Pathways: [M Phase](#), [Maintenance of Protein Location](#), [SARS-CoV-2 Protein Interactome](#)

Application Details

Application Notes: WB 1:500-1:2000, IHC 1:50-1:200

Restrictions: For Research Use only

Handling

Format: Liquid

Concentration: 0.7 mg/mL

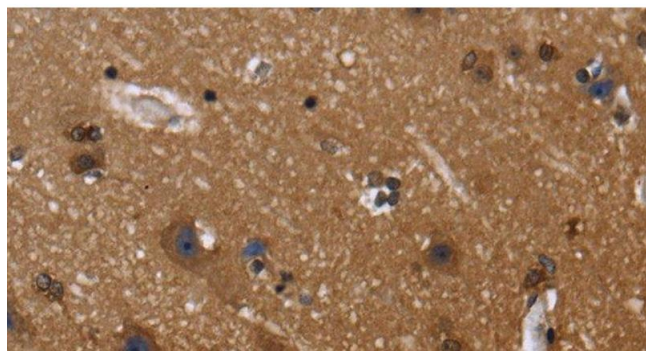
Buffer: PBS with 0.05 % sodium azide and 50 % glycerol, PH7.4

Preservative: Sodium azide

Precaution of Use: This product contains Sodium azide: a POISONOUS AND HAZARDOUS SUBSTANCE which should be handled by trained staff only.

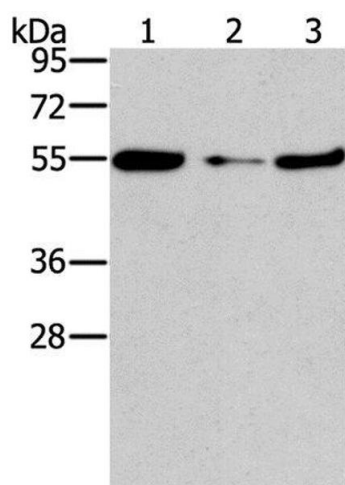
Storage: -20 °C

Storage Comment: Store at -20°C. Avoid freeze / thaw cycles.



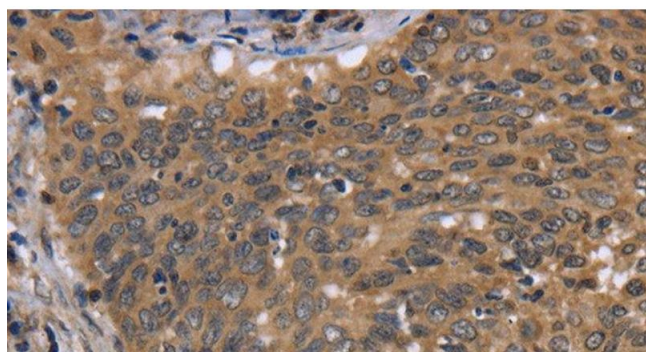
Immunohistochemistry (Paraffin-embedded Sections)

Image 1. Immunohistochemistry of paraffin-embedded Human brain using FGFR10P Polyclonal Antibody at dilution of 1:40



Western Blotting

Image 2. Western Blot analysis of Mouse heart tissue and NIH/3T3 cell, Mouse liver tissue using FGFR10P Polyclonal Antibody at dilution of 1:850



Immunohistochemistry (Paraffin-embedded Sections)

Image 3. Immunohistochemistry of paraffin-embedded Human cervical cancer using FGFR10P Polyclonal Antibody at dilution of 1:40