

Datasheet for ABIN7241474

**anti-NEDD9 antibody**[Go to Product page](#)**1** Image

## Overview

Quantity:	200 µL
Target:	NEDD9
Reactivity:	Human
Host:	Rabbit
Clonality:	Polyclonal
Conjugate:	This NEDD9 antibody is un-conjugated
Application:	Western Blotting (WB), ELISA

## Product Details

Immunogen:	Recombinant protein of human NEDD9
Isotype:	IgG
Characteristics:	Polyclonal Antibody
Purification:	Affinity purification

## Target Details

Target:	NEDD9
Alternative Name:	NEDD9 ( <a href="#">NEDD9 Products</a> )
Background:	<p>The protein encoded by this gene is a member of the CRK-associated substrates family. Members of this family are adhesion docking molecules that mediate protein-protein interactions for signal transduction pathways. This protein is a focal adhesion protein that acts as a scaffold to regulate signaling complexes important in cell attachment, migration and</p>

## Target Details

invasion as well as apoptosis and the cell cycle. This protein has also been reported to have a role in cancer metastasis. Alternative splicing results in multiple transcript variants.

Molecular Weight: 93 kDa

UniProt: [Q14511](#)

## Application Details

Application Notes: WB 1:200-1:1000

Restrictions: For Research Use only

## Handling

Format: Liquid

Concentration: 0.4 mg/mL

Buffer: PBS with 0.05 % sodium azide and 50 % glycerol, PH7.4

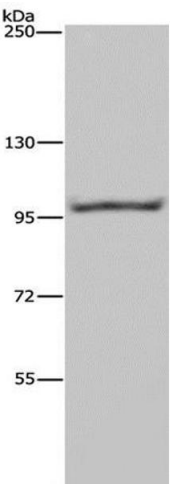
Preservative: Sodium azide

Precaution of Use: This product contains Sodium azide: a POISONOUS AND HAZARDOUS SUBSTANCE which should be handled by trained staff only.

Storage: -20 °C

Storage Comment: Store at -20°C. Avoid freeze / thaw cycles.

## Images



### Western Blotting

**Image 1.** Western Blot analysis of Raji cell using NEDD9 Polyclonal Antibody at dilution of 1:650