

Datasheet for ABIN7241627
anti-Lamin B Receptor antibody

2 Images

[Go to Product page](#)

Overview

Quantity:	200 µL
Target:	Lamin B Receptor (LBR)
Reactivity:	Human
Host:	Rabbit
Clonality:	Polyclonal
Conjugate:	This Lamin B Receptor antibody is un-conjugated
Application:	Western Blotting (WB), Immunohistochemistry (IHC), ELISA

Product Details

Immunogen:	Recombinant protein of human LBR
Isotype:	IgG
Characteristics:	Polyclonal Antibody
Purification:	Affinity purification

Target Details

Target:	Lamin B Receptor (LBR)
Alternative Name:	LBR (LBR Products)
Background:	<p>The protein encoded by this gene belongs to the ERG4/ERG24 family. It localized in the nuclear envelope inner membrane and anchors the lamina and the heterochromatin to the membrane.</p> <p>It may mediate interaction between chromatin and lamin B. Mutations of this gene has been associated with autosomal recessive HEM/Greenberg skeletal dysplasia. Alternative splicing</p>

Target Details

occurs at this locus and two transcript variants encoding the same protein have been identified.

Molecular Weight: 71 kDa

UniProt: [Q14739](#)

Application Details

Application Notes: WB 1:500-1:2000, IHC 1:50-1:200

Restrictions: For Research Use only

Handling

Format: Liquid

Concentration: 0.4 mg/mL

Buffer: PBS with 0.05 % sodium azide and 50 % glycerol, PH7.4

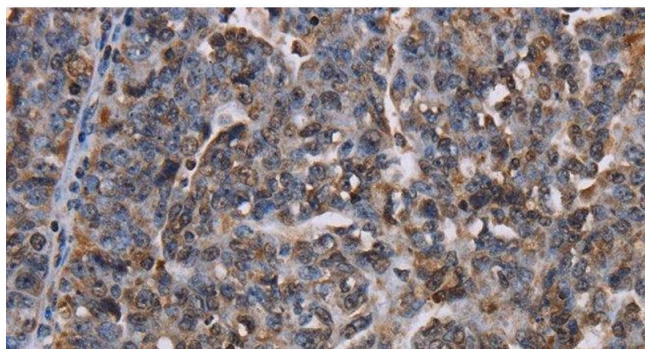
Preservative: Sodium azide

Precaution of Use: This product contains Sodium azide: a POISONOUS AND HAZARDOUS SUBSTANCE which should be handled by trained staff only.

Storage: -20 °C

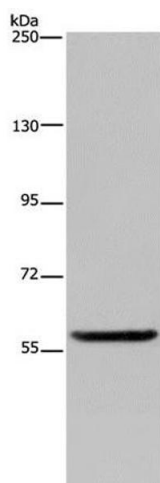
Storage Comment: Store at -20°C. Avoid freeze / thaw cycles.

Images



Immunohistochemistry (Paraffin-embedded Sections)

Image 1. Immunohistochemistry of paraffin-embedded Human ovarian cancer using LBR Polyclonal Antibody at dilution of 1:50



Western Blotting

Image 2. Western Blot analysis of Human fetal brain tissue using LBR Polyclonal Antibody at dilution of 1:300