

Datasheet for ABIN7241630

anti-LDOC1 antibody[Go to Product page](#)**1** Image

Overview

Quantity:	200 µL
Target:	LDOC1
Reactivity:	Human
Host:	Rabbit
Clonality:	Polyclonal
Conjugate:	This LDOC1 antibody is un-conjugated
Application:	Immunohistochemistry (IHC), ELISA

Product Details

Immunogen:	Recombinant protein of human LDOC1
Isotype:	IgG
Characteristics:	Polyclonal Antibody
Purification:	Affinity purification

Target Details

Target:	LDOC1
Alternative Name:	LDOC1 (LDOC1 Products)
Background:	The protein encoded by this gene contains a leucine zipper-like motif and a proline-rich region that shares marked similarity with an SH3-binding domain. The protein localizes to the nucleus and is down-regulated in some cancer cell lines. It is thought to regulate the transcriptional response mediated by the nuclear factor kappa B (NF-kappaB). The gene has been proposed as

Target Details

a tumor suppressor gene whose protein product may have an important role in the development and/or progression of some cancers.

UniProt: [O95751](#)

Application Details

Application Notes: IHC 1:50-1:200

Restrictions: For Research Use only

Handling

Format: Liquid

Concentration: 0.4 mg/mL

Buffer: PBS with 0.05 % sodium azide and 50 % glycerol, PH7.4

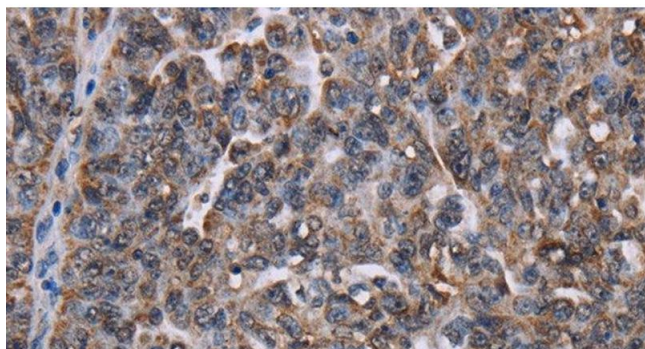
Preservative: Sodium azide

Precaution of Use: This product contains Sodium azide: a POISONOUS AND HAZARDOUS SUBSTANCE which should be handled by trained staff only.

Storage: -20 °C

Storage Comment: Store at -20°C. Avoid freeze / thaw cycles.

Images



Immunohistochemistry (Paraffin-embedded Sections)

Image 1. Immunohistochemistry of paraffin-embedded Human ovarian cancer tissue using LDOC1 Polyclonal Antibody at dilution 1:50