

Datasheet for ABIN7241774

anti-NUP50 antibody**3** Images[Go to Product page](#)

Overview

Quantity:	200 µL
Target:	NUP50
Reactivity:	Human
Host:	Rabbit
Clonality:	Polyclonal
Conjugate:	This NUP50 antibody is un-conjugated
Application:	Western Blotting (WB), ELISA, Immunohistochemistry (IHC)

Product Details

Immunogen:	Recombinant protein of human NUP50
Isotype:	IgG
Characteristics:	Polyclonal Antibody
Purification:	Affinity purification

Target Details

Target:	NUP50
Alternative Name:	NUP50 (NUP50 Products)
Background:	The nuclear pore complex is a massive structure that extends across the nuclear envelope, forming a gateway that regulates the flow of macromolecules between the nucleus and the Cytoplasm. Nucleoporins are the main components of the nuclear pore complex in eukaryotic cells. The protein encoded by this gene is a member of the FG-repeat containing nucleoporins

Target Details

that functions as a soluble cofactor in importin-alpha:beta-mediated nuclear protein import. Pseudogenes of this gene are found on chromosomes 5, 6, and 14. Two transcript variants encoding different isoforms have been found for this gene.

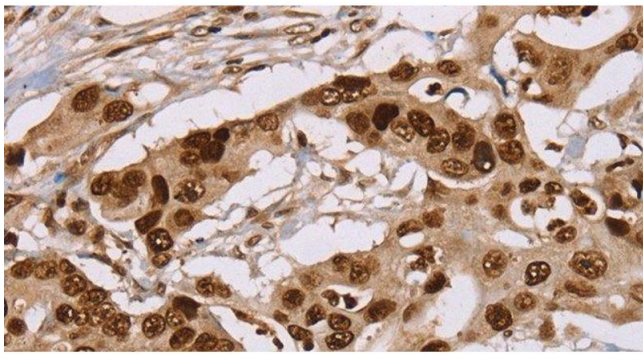
Molecular Weight:	50 kDa
UniProt:	Q9UKX7
Pathways:	Tube Formation

Application Details

Application Notes:	WB 1:200-1:1000, IHC 1:50-1:200
Restrictions:	For Research Use only

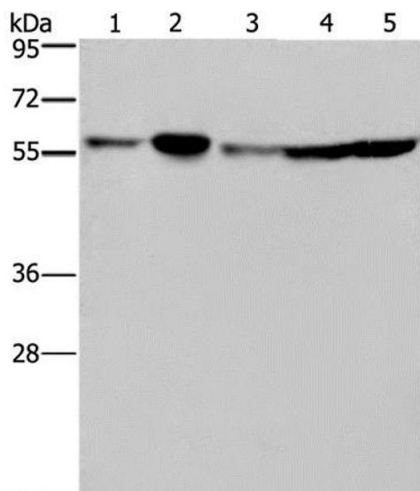
Handling

Format:	Liquid
Concentration:	0.4 mg/mL
Buffer:	PBS with 0.05 % sodium azide and 50 % glycerol, PH7.4
Preservative:	Sodium azide
Precaution of Use:	This product contains Sodium azide: a POISONOUS AND HAZARDOUS SUBSTANCE which should be handled by trained staff only.
Storage:	-20 °C
Storage Comment:	Store at -20°C. Avoid freeze / thaw cycles.



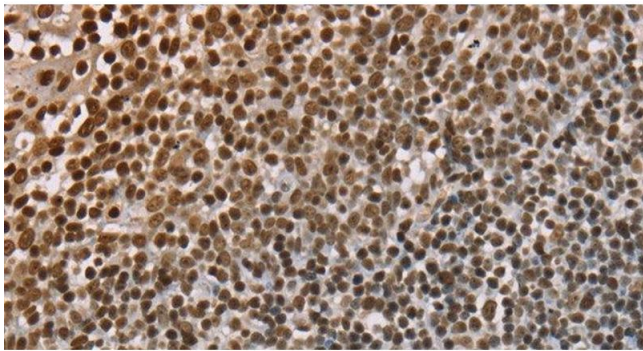
Immunohistochemistry (Paraffin-embedded Sections)

Image 1. Immunohistochemistry of paraffin-embedded Human colon cancer using NUP50 Polyclonal Antibody at dilution of 1:30



Western Blotting

Image 2. Western Blot analysis of Hela, 293T, A549, HT-29 and K562 cell using NUP50 Polyclonal Antibody at dilution of 1:200



Immunohistochemistry (Paraffin-embedded Sections)

Image 3. Immunohistochemistry of paraffin-embedded Human tonsil using NUP50 Polyclonal Antibody at dilution of 1:30