

Datasheet for ABIN7241786

**anti-OTUB1 antibody**

3 Images

[Go to Product page](#)

## Overview

|              |                                                          |
|--------------|----------------------------------------------------------|
| Quantity:    | 200 µL                                                   |
| Target:      | OTUB1                                                    |
| Reactivity:  | Human, Mouse, Rat                                        |
| Host:        | Rabbit                                                   |
| Clonality:   | Polyclonal                                               |
| Conjugate:   | This OTUB1 antibody is un-conjugated                     |
| Application: | Western Blotting (WB), ELISA, Immunohistochemistry (IHC) |

## Product Details

|                  |                                    |
|------------------|------------------------------------|
| Immunogen:       | Recombinant protein of human OTUB1 |
| Isotype:         | IgG                                |
| Characteristics: | Polyclonal Antibody                |
| Purification:    | Affinity purification              |

## Target Details

|                   |                                                                                                                                                                                                                                                                                                                                                                                     |
|-------------------|-------------------------------------------------------------------------------------------------------------------------------------------------------------------------------------------------------------------------------------------------------------------------------------------------------------------------------------------------------------------------------------|
| Target:           | OTUB1                                                                                                                                                                                                                                                                                                                                                                               |
| Alternative Name: | OTUB1 ( <a href="#">OTUB1 Products</a> )                                                                                                                                                                                                                                                                                                                                            |
| Background:       | The product of this gene is a member of the OTU (ovarian tumor) superfamily of predicted cysteine proteases. The encoded protein is a highly specific ubiquitin iso-peptidase, and cleaves ubiquitin from branched poly-ubiquitin chains but not from ubiquitinated substrates. It interacts with another ubiquitin protease and an E3 ubiquitin ligase that inhibits cytokine gene |

## Target Details

transcription in the immune system. It is proposed to function in specific ubiquitin-dependent pathways, possibly by providing an editing function for polyubiquitin chain growth.

|                   |                        |
|-------------------|------------------------|
| Molecular Weight: | 31 kDa                 |
| UniProt:          | <a href="#">Q96FW1</a> |

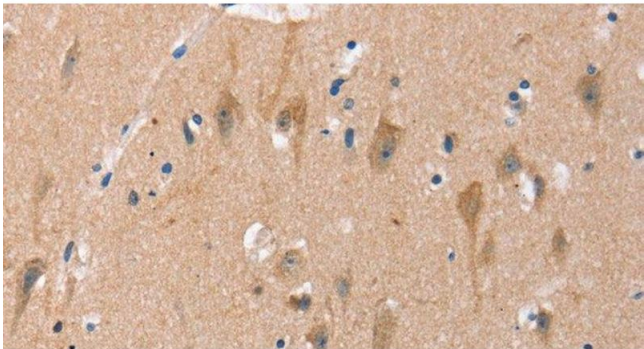
## Application Details

|                    |                                  |
|--------------------|----------------------------------|
| Application Notes: | WB 1:1000-1:5000, IHC 1:50-1:200 |
| Restrictions:      | For Research Use only            |

## Handling

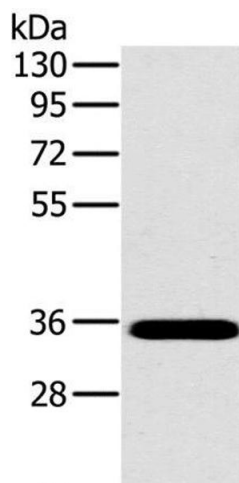
|                    |                                                                                                                        |
|--------------------|------------------------------------------------------------------------------------------------------------------------|
| Format:            | Liquid                                                                                                                 |
| Concentration:     | 0.5 mg/mL                                                                                                              |
| Buffer:            | PBS with 0.05 % sodium azide and 50 % glycerol, PH7.4                                                                  |
| Preservative:      | Sodium azide                                                                                                           |
| Precaution of Use: | This product contains Sodium azide: a POISONOUS AND HAZARDOUS SUBSTANCE which should be handled by trained staff only. |
| Storage:           | -20 °C                                                                                                                 |
| Storage Comment:   | Store at -20°C. Avoid freeze / thaw cycles.                                                                            |

## Images



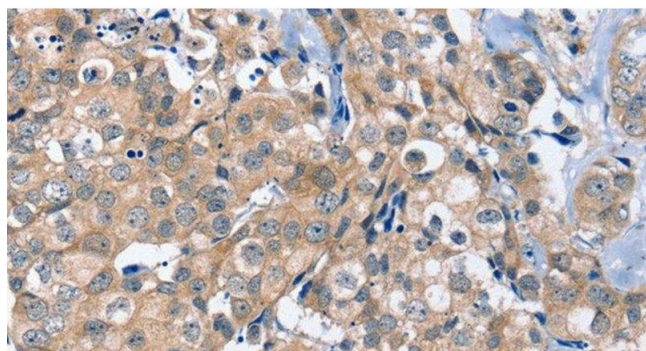
### Immunohistochemistry (Paraffin-embedded Sections)

**Image 1.** Immunohistochemistry of paraffin-embedded Human brain using OTUB1 Polyclonal Antibody at dilution of 1:40



#### Western Blotting

**Image 2.** Western Blot analysis of Mouse brain tissue using OTUB1 Polyclonal Antibody at dilution of 1:800



#### Immunohistochemistry (Paraffin-embedded Sections)

**Image 3.** Immunohistochemistry of paraffin-embedded Human breast cancer using OTUB1 Polyclonal Antibody at dilution of 1:40