

Datasheet for ABIN7241804

anti-PMPCB antibody**2** Images[Go to Product page](#)

Overview

Quantity:	200 µL
Target:	PMPCB
Reactivity:	Human, Mouse, Rat
Host:	Rabbit
Clonality:	Polyclonal
Conjugate:	This PMPCB antibody is un-conjugated
Application:	Immunohistochemistry (IHC), ELISA

Product Details

Immunogen:	Recombinant protein of human PMPCB
Isotype:	IgG
Characteristics:	Polyclonal Antibody
Purification:	Affinity purification

Target Details

Target:	PMPCB
Alternative Name:	PMPCB (PMPCB Products)
Background:	This gene is a member of the peptidase M16 family and encodes a protein with a zinc-binding motif. This protein is located in the mitochondrial matrix and catalyzes the cleavage of the leader peptides of precursor proteins newly imported into the mitochondria, though it only functions as part of a heterodimeric complex.

Target Details

UniProt:	O75439
Pathways:	SARS-CoV-2 Protein Interactome

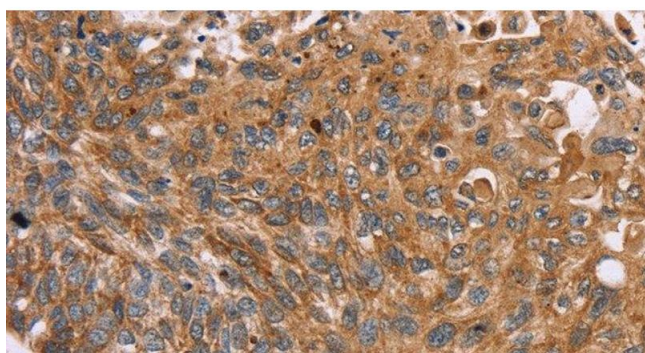
Application Details

Application Notes:	IHC 1:50-1:200
Restrictions:	For Research Use only

Handling

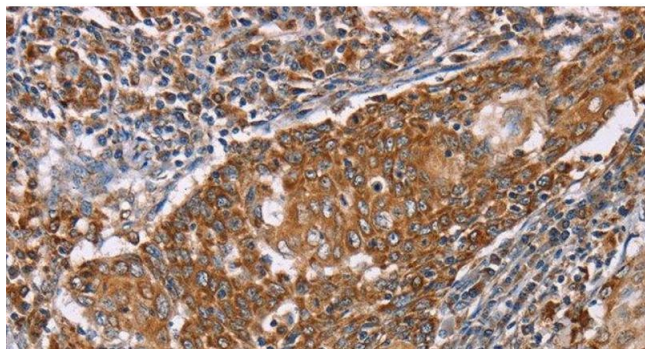
Format:	Liquid
Concentration:	0.7 mg/mL
Buffer:	PBS with 0.05 % sodium azide and 50 % glycerol, PH7.4
Preservative:	Sodium azide
Precaution of Use:	This product contains Sodium azide: a POISONOUS AND HAZARDOUS SUBSTANCE which should be handled by trained staff only.
Storage:	-20 °C
Storage Comment:	Store at -20°C. Avoid freeze / thaw cycles.

Images



Immunohistochemistry (Paraffin-embedded Sections)

Image 1. Immunohistochemistry of paraffin-embedded Human esophagus cancer tissue using PMPCB Polyclonal Antibody at dilution 1:50



Immunohistochemistry (Paraffin-embedded Sections)

Image 2. Immunohistochemistry of paraffin-embedded Human cervical cancer tissue using PMPCB Polyclonal Antibody at dilution 1:50