

Datasheet for ABIN7241813

anti-PYGM antibody

3 Images

[Go to Product page](#)

Overview

Quantity:	200 µL
Target:	PYGM
Reactivity:	Human, Mouse, Rat
Host:	Rabbit
Clonality:	Polyclonal
Application:	Western Blotting (WB), Immunohistochemistry (IHC), ELISA

Product Details

Immunogen:	Recombinant protein of human PYGM
Isotype:	IgG
Characteristics:	Polyclonal Antibody
Purification:	Affinity purification

Target Details

Target:	PYGM
Alternative Name:	PYGM (PYGM Products)
Background:	<p>This gene encodes a muscle enzyme involved in glycogenolysis. Highly similar enzymes encoded by different genes are found in liver and brain. Mutations in this gene are associated with McArdle disease (myophosphorylase deficiency), a glycogen storage disease of muscle. Alternative splicing results in multiple transcript variants.</p>
Molecular Weight:	97 kDa

Target Details

UniProt:	P11217
Pathways:	Cellular Glucan Metabolic Process

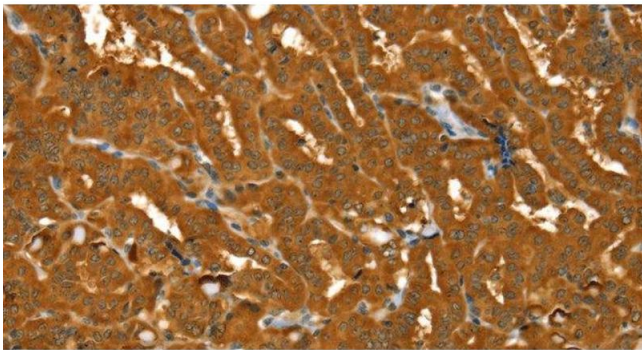
Application Details

Application Notes:	WB 1:500-1:2000, IHC 1:30-1:150
Restrictions:	For Research Use only

Handling

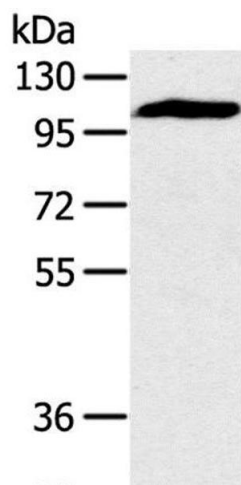
Format:	Liquid
Concentration:	0.4 mg/mL
Buffer:	PBS with 0.05 % sodium azide and 50 % glycerol, PH7.4
Preservative:	Sodium azide
Precaution of Use:	This product contains Sodium azide: a POISONOUS AND HAZARDOUS SUBSTANCE which should be handled by trained staff only.
Storage:	-20 °C
Storage Comment:	Store at -20°C. Avoid freeze / thaw cycles.

Images



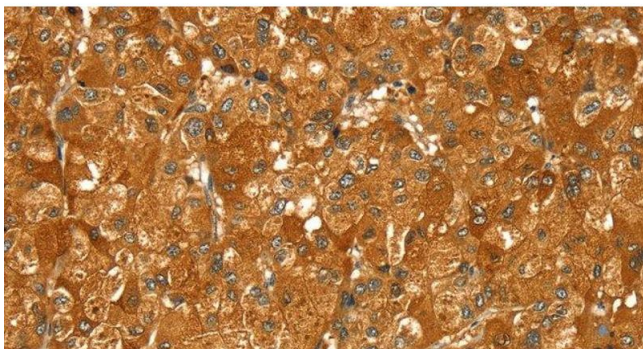
Immunohistochemistry (Paraffin-embedded Sections)

Image 1. Immunohistochemistry of paraffin-embedded Human thyroid cancer using PYGM Polyclonal Antibody at dilution of 1:30



Western Blotting

Image 2. Western Blot analysis of Mouse heart tissue using PYGM Polyclonal Antibody at dilution of 1:400



Immunohistochemistry (Paraffin-embedded Sections)

Image 3. Immunohistochemistry of paraffin-embedded Human liver cancer using PYGM Polyclonal Antibody at dilution of 1:30