

Datasheet for ABIN7241849

**anti-GTR2 antibody**[Go to Product page](#)**1** Image

## Overview

Quantity:	200 µL
Target:	GTR2 (RRAGC)
Reactivity:	Human, Mouse
Host:	Rabbit
Clonality:	Polyclonal
Conjugate:	This GTR2 antibody is un-conjugated
Application:	Western Blotting (WB), ELISA

## Product Details

Immunogen:	Recombinant protein of human RRAGC
Isotype:	IgG
Characteristics:	Polyclonal Antibody
Purification:	Affinity purification

## Target Details

Target:	GTR2 (RRAGC)
Alternative Name:	RRAGC ( <a href="#">RRAGC Products</a> )
Background:	This gene encodes a member of the GTR/RAG GTP-binding protein family. The encoded protein is a monomeric guanine nucleotide-binding protein which forms a heterodimer with RRAGA and RRAGB and is primarily localized to the cytoplasm. The encoded protein promotes intracellular localization of the mTOR complex. Alternative splicing results in multiple transcript variants.

Target Details

Molecular Weight:	44 kDa
UniProt:	<a href="#">Q9HB90</a>
Pathways:	<a href="#">Autophagy</a>

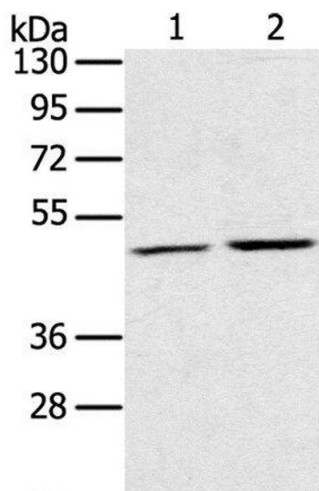
Application Details

Application Notes:	WB 1:500-1:2000
Restrictions:	For Research Use only

Handling

Format:	Liquid
Concentration:	0.5 mg/mL
Buffer:	PBS with 0.05 % sodium azide and 50 % glycerol, PH7.4
Preservative:	Sodium azide
Precaution of Use:	This product contains Sodium azide: a POISONOUS AND HAZARDOUS SUBSTANCE which should be handled by trained staff only.
Storage:	-20 °C
Storage Comment:	Store at -20°C. Avoid freeze / thaw cycles.

Images



**Western Blotting**

**Image 1.** Western Blot analysis of K562 and NIH/3T3 cell using RRAGC Polyclonal Antibody at dilution of 1:400