

Datasheet for ABIN7241852

anti-S100A11 antibody[Go to Product page](#)**1** Image

Overview

Quantity:	200 µL
Target:	S100A11
Reactivity:	Human, Rat, Mouse
Host:	Rabbit
Clonality:	Polyclonal
Conjugate:	This S100A11 antibody is un-conjugated
Application:	Western Blotting (WB), ELISA

Product Details

Immunogen:	Recombinant protein of human S100A11
Isotype:	IgG
Characteristics:	Polyclonal Antibody
Purification:	Affinity purification

Target Details

Target:	S100A11
Alternative Name:	S100A11 (S100A11 Products)
Background:	The protein encoded by this gene is a member of the S100 family of proteins containing 2 EF-hand calcium-binding motifs. S100 proteins are localized in the cytoplasm and/or nucleus of a wide range of cells, and involved in the regulation of a number of cellular processes such as cell cycle progression and differentiation. S100 genes include at least 13 members which are

Target Details

located as a cluster on chromosome 1q21. This protein may function in motility, invasion, and tubulin polymerization.

Molecular Weight: 12 kDa

UniProt: [P31949](#)

Pathways: [S100 Proteins](#)

Application Details

Application Notes: WB 1:1000-1:5000

Restrictions: For Research Use only

Handling

Format: Liquid

Concentration: 0.4 mg/mL

Buffer: PBS with 0.05 % sodium azide and 50 % glycerol, PH7.4

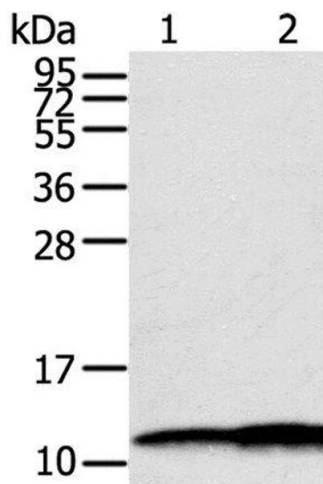
Preservative: Sodium azide

Precaution of Use: This product contains Sodium azide: a POISONOUS AND HAZARDOUS SUBSTANCE which should be handled by trained staff only.

Storage: -20 °C

Storage Comment: Store at -20°C. Avoid freeze / thaw cycles.

Images



Western Blotting

Image 1. Western Blot analysis of Hepg2 and A549 cell using S100A11 Polyclonal Antibody at dilution of 1:600