



Datasheet for ABIN7241861 anti-SAMD3 antibody



[Go to Product page](#)

1 Image

Overview

Quantity:	200 µL
Target:	SAMD3
Reactivity:	Human
Host:	Rabbit
Clonality:	Polyclonal
Conjugate:	This SAMD3 antibody is un-conjugated
Application:	ELISA, Western Blotting (WB)

Product Details

Immunogen:	Recombinant protein of human SAMD3
Isotype:	IgG
Characteristics:	Polyclonal Antibody
Purification:	Affinity purification

Target Details

Target:	SAMD3
Alternative Name:	SAMD3 (SAMD3 Products)
Background:	The sterile alpha motif (SAM) domain is a 70 residue structure found in a large number of proteins involved in diverse processes present throughout the eukaryotes. The SAM domain is known to bind RNA and is arranged in a small five-helix bundle with two large interfaces. There are three isoforms of SAMD3 produced by alternative splicing. The isoform 1 has been chosen

Target Details

as the canonical sequence. All positional information in this entry refers to it. The sequence of isoform 2 differs from the canonical sequence as follows: 219-221: FLW → *AGV*, 222-520: *Missing*. And the sequence of isoform 3 differs from the canonical sequence as follows: 1-1: *M* → *MRSSKLQSPSPSQEKQGVYLQETAM*.

Molecular Weight: 61 kDa

UniProt: [Q8N6K7](#)

Application Details

Application Notes: WB 1:500-1:2000

Restrictions: For Research Use only

Handling

Format: Liquid

Concentration: 0.3 mg/mL

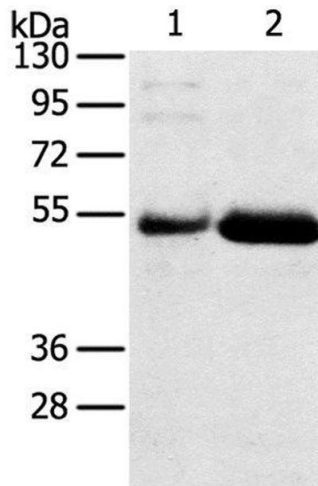
Buffer: PBS with 0.05 % sodium azide and 50 % glycerol, PH7.4

Preservative: Sodium azide

Precaution of Use: This product contains Sodium azide: a POISONOUS AND HAZARDOUS SUBSTANCE which should be handled by trained staff only.

Storage: -20 °C

Storage Comment: Store at -20°C. Avoid freeze / thaw cycles.



Western Blotting

Image 1. Western Blot analysis of Human placenta and stomach cancer tissue using SAMD3 Polyclonal Antibody at dilution of 1:400