



Datasheet for ABIN7241906

## anti-STX8 antibody



[Go to Product page](#)

### 2 Images

#### Overview

Quantity:	200 µL
Target:	STX8
Reactivity:	Human, Mouse, Rat
Host:	Rabbit
Clonality:	Polyclonal
Conjugate:	This STX8 antibody is un-conjugated
Application:	ELISA, Immunohistochemistry (IHC)

#### Product Details

Immunogen:	Recombinant protein of human STX8
Isotype:	IgG
Characteristics:	Polyclonal Antibody
Purification:	Affinity purification

#### Target Details

Target:	STX8
Alternative Name:	STX8 ( <a href="#">STX8 Products</a> )
Background:	The gene is a member of the syntaxin family. The encoded protein is involved in protein trafficking from early to late endosomes via vesicle fusion and exocytosis. A related pseudogene has been identified on chromosome 12. Alternative splicing results in multiple transcript variants.

## Target Details

UniProt:	<a href="#">Q9UNK0</a>
Pathways:	<a href="#">Synaptic Vesicle Exocytosis</a>

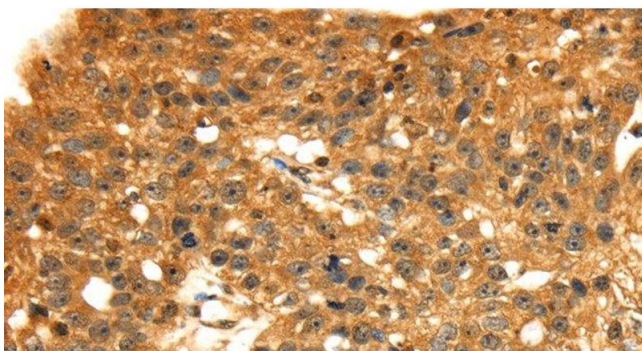
## Application Details

Application Notes:	IHC 1:30-1:150
Restrictions:	For Research Use only

## Handling

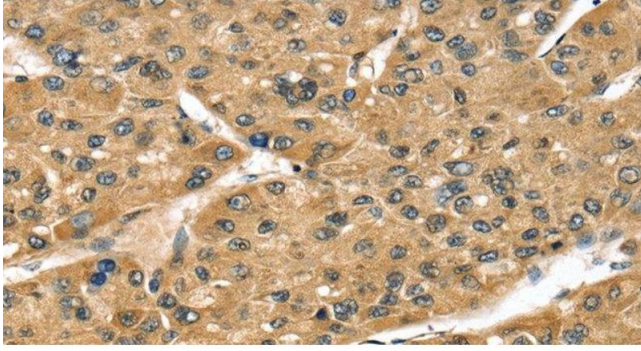
Format:	Liquid
Concentration:	1 mg/mL
Buffer:	PBS with 0.05 % sodium azide and 50 % glycerol, PH7.4
Preservative:	Sodium azide
Precaution of Use:	This product contains Sodium azide: a POISONOUS AND HAZARDOUS SUBSTANCE which should be handled by trained staff only.
Storage:	-20 °C
Storage Comment:	Store at -20°C. Avoid freeze / thaw cycles.

## Images



### Immunohistochemistry (Paraffin-embedded Sections)

**Image 1.** Immunohistochemistry of paraffin-embedded Human breast cancer tissue using STX8 Polyclonal Antibody at dilution 1:45



### Immunohistochemistry (Paraffin-embedded Sections)

**Image 2.** Immunohistochemistry of paraffin-embedded Human liver cancer tissue using STX8 Polyclonal Antibody at dilution 1:45