



[Go to Product page](#)

Datasheet for ABIN7241939

anti-ADO antibody

2 Images

Overview

Quantity:	200 µL
Target:	ADO
Reactivity:	Human, Mouse
Host:	Rabbit
Clonality:	Polyclonal
Conjugate:	This ADO antibody is un-conjugated
Application:	ELISA, Western Blotting (WB), Immunohistochemistry (IHC)

Product Details

Immunogen:	Synthetic peptide of human ADO
Isotype:	IgG
Characteristics:	Polyclonal Antibody
Purification:	Affinity purification

Target Details

Target:	ADO
Alternative Name:	ADO (ADO Products)
Background:	Human thiol dioxygenases include cysteine dioxygenase (CDO, MIM 603943) and cysteamine (2-aminoethanethiol) dioxygenase (ADO, EC 1.13.11.19). CDO adds 2 oxygen atoms to free cysteine, whereas ADO adds 2 oxygen atoms to free cysteamine to form hypotaurine. Mouse Ado has strong and specific dioxygenase activity in vitro towards cysteamine but not cysteine.

Target Details

Recombinant Ado was shown to bind iron. Overexpression of Ado in HepG2/C3A cells increased the production of hypotaurine from cysteamine. Similar results were found with human ADO. When endogenous expression of ADO was reduced by RNA-mediated interference, hypotaurine production decreased. The demonstration of high levels of ADO in brain challenges the previous assumption that most of the taurine in the brain is a consequence of CDO activity.

Molecular Weight: 30 kDa

NCBI Accession: [NP_116193](#)

UniProt: [Q96SZ5](#)

Application Details

Application Notes: WB 1:1000-1:5000, IHC 1:25-1:100

Restrictions: For Research Use only

Handling

Format: Liquid

Concentration: 0.3 mg/mL

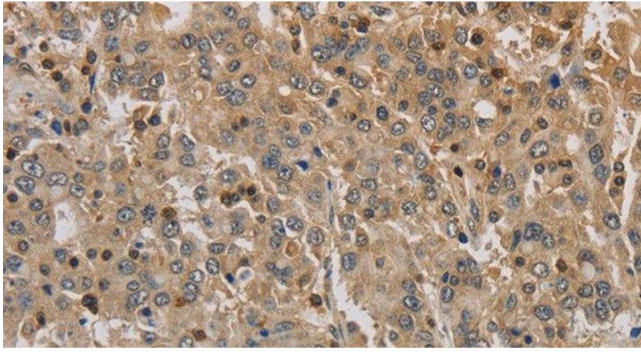
Buffer: PBS with 0.05 % sodium azide and 50 % glycerol, PH7.4

Preservative: Sodium azide

Precaution of Use: This product contains Sodium azide: a POISONOUS AND HAZARDOUS SUBSTANCE which should be handled by trained staff only.

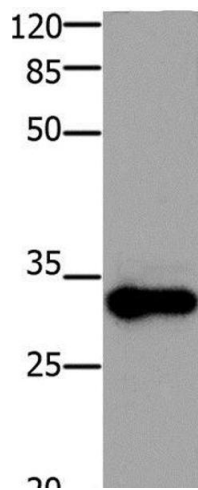
Storage: -20 °C

Storage Comment: Store at -20°C. Avoid freeze / thaw cycles.



Immunohistochemistry (Paraffin-embedded Sections)

Image 1. Immunohistochemistry of paraffin-embedded Human liver cancer using ADO Polyclonal Antibody at dilution of 1:30



Western Blotting

Image 2. Western Blot analysis of Mouse testis tissue using ADO Polyclonal Antibody at dilution of 1:1200