

Datasheet for ABIN7241960

**anti-Rab3c antibody****1** Image[Go to Product page](#)

## Overview

Quantity:	200 µL
Target:	Rab3c
Reactivity:	Human, Mouse, Rat
Host:	Rabbit
Clonality:	Polyclonal
Conjugate:	This Rab3c antibody is un-conjugated
Application:	ELISA, Western Blotting (WB)

## Product Details

Immunogen:	Synthetic peptide of human RAB3c
Isotype:	IgG
Characteristics:	Polyclonal Antibody
Purification:	Affinity purification

## Target Details

Target:	Rab3c
Alternative Name:	RAB3C ( <a href="#">Rab3c Products</a> )
Background:	Ras-related protein Rab-3C is a protein that in humans is encoded by the RAB3C gene. RAB proteins, such as RAB3C, are small GTPases implicated in the regulation of vesicular trafficking between membrane compartments. It involved in protein transport and vesicular traffic probably.

## Target Details

Molecular Weight:	26 kDa
NCBI Accession:	<a href="#">NP_612462</a>
UniProt:	<a href="#">Q96E17</a>

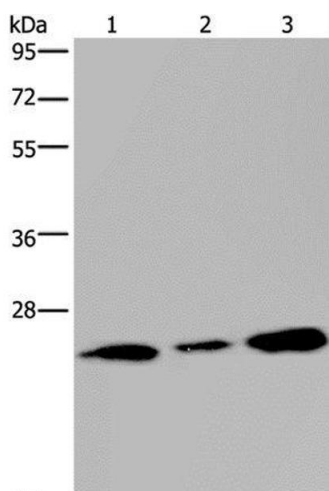
## Application Details

Application Notes:	WB 1:500-1:2000
Restrictions:	For Research Use only

## Handling

Format:	Liquid
Concentration:	0.3 mg/mL
Buffer:	PBS with 0.05 % sodium azide and 50 % glycerol, PH7.4
Preservative:	Sodium azide
Precaution of Use:	This product contains Sodium azide: a POISONOUS AND HAZARDOUS SUBSTANCE which should be handled by trained staff only.
Storage:	-20 °C
Storage Comment:	Store at -20°C. Avoid freeze / thaw cycles.

## Images



### Western Blotting

**Image 1.** Western Blot analysis of Human fetal brain tissue and 293T cell using RAB3c Polyclonal Antibody at dilution of 1:400