

Datasheet for ABIN7241972

anti-CKM antibody**2** Images[Go to Product page](#)

Overview

Quantity:	200 µL
Target:	CKM
Reactivity:	Human, Mouse, Rat
Host:	Rabbit
Clonality:	Polyclonal
Conjugate:	This CKM antibody is un-conjugated
Application:	Western Blotting (WB), ELISA, Immunohistochemistry (IHC)

Product Details

Immunogen:	Synthetic peptide of human CKM
Isotype:	IgG
Characteristics:	Polyclonal Antibody
Purification:	Affinity purification

Target Details

Target:	CKM
Alternative Name:	CKM (CKM Products)
Background:	The protein encoded by this gene is a cytoplasmic enzyme involved in energy homeostasis and is an important serum marker for myocardial infarction. The encoded protein reversibly catalyzes the transfer of phosphate between ATP and various phosphagens such as creatine phosphate. It acts as a homodimer in striated muscle as well as in other tissues, and as a

Target Details

heterodimer with a similar brain isozyme in heart. The encoded protein is a member of the ATP:guanido phosphotransferase protein family

Molecular Weight: 43 kDa

NCBI Accession: [NP_001815](#)

UniProt: [P06732](#)

Application Details

Application Notes: WB 1:1000-1:5000, IHC 1:50-1:200

Restrictions: For Research Use only

Handling

Format: Liquid

Concentration: 0.6 mg/mL

Buffer: PBS with 0.05 % sodium azide and 50 % glycerol, PH7.4

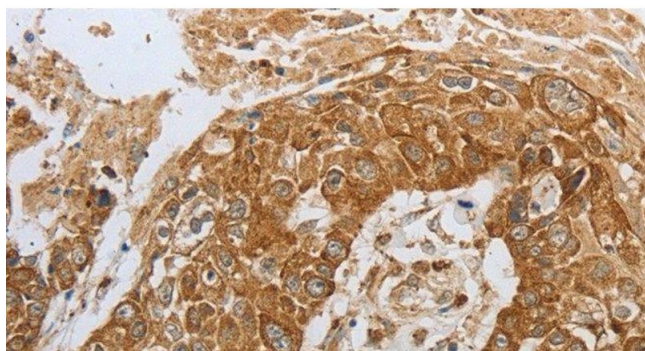
Preservative: Sodium azide

Precaution of Use: This product contains Sodium azide: a POISONOUS AND HAZARDOUS SUBSTANCE which should be handled by trained staff only.

Storage: -20 °C

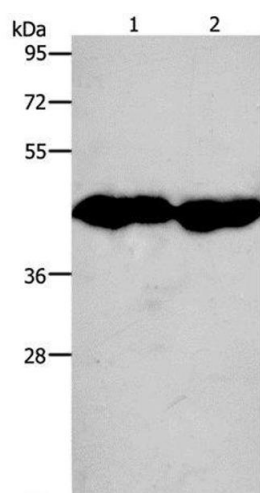
Storage Comment: Store at -20°C. Avoid freeze / thaw cycles.

Images



Immunohistochemistry (Paraffin-embedded Sections)

Image 1. Immunohistochemistry of paraffin-embedded Human esophagus cancer using CKM Polyclonal Antibody at dilution of 1:50



Western Blotting

Image 2. Western Blot analysis of Mouse muscle and Heart tissue using CKM Polyclonal Antibody at dilution of 1:950