



## Datasheet for ABIN7241993 anti-INHBA antibody



[Go to Product page](#)

### 1 Image

#### Overview

Quantity:	200 µL
Target:	INHBA
Reactivity:	Human, Rat, Mouse
Host:	Rabbit
Clonality:	Polyclonal
Application:	Western Blotting (WB), ELISA

#### Product Details

Immunogen:	Synthetic peptide of human INHBA
Isotype:	IgG
Characteristics:	Polyclonal Antibody
Purification:	Affinity purification

#### Target Details

Target:	INHBA
Alternative Name:	INHBA ( <a href="#">INHBA Products</a> )

**Background:** The inhibin beta A subunit joins the alpha subunit to form a pituitary FSH secretion inhibitor. Inhibin has been shown to regulate gonadal stromal cell proliferation negatively and to have tumor-suppressor activity. In addition, serum levels of inhibin have been shown to reflect the size of granulosa-cell tumors and can therefore be used as a marker for primary as well as recurrent disease. Because expression in gonadal and various extragonadal tissues may vary

## Target Details

---

severalfold in a tissue-specific fashion, it is proposed that inhibin may be both a growth/differentiation factor and a hormone. Furthermore, the beta A subunit forms a homodimer, activin A, and also joins with a beta B subunit to form a heterodimer, activin AB, both of which stimulate FSH secretion. Finally, it has been shown that the beta A subunit mRNA is identical to the erythroid differentiation factor subunit mRNA and that only one gene for this mRNA exists in the human genome.

---

Molecular Weight: 47 kDa

---

NCBI Accession: [NP\\_002183](#)

---

UniProt: [P08476](#)

---

Pathways: [Hormone Transport](#), [Peptide Hormone Metabolism](#), [Hormone Activity](#), [Negative Regulation of Hormone Secretion](#), [Autophagy](#)

## Application Details

---

---

Application Notes: WB 1:1000-1:2000

---

Restrictions: For Research Use only

## Handling

---

---

Format: Liquid

---

Concentration: 0.6 mg/mL

---

Buffer: PBS with 0.05 % sodium azide and 50 % glycerol, PH7.4

---

Preservative: Sodium azide

---

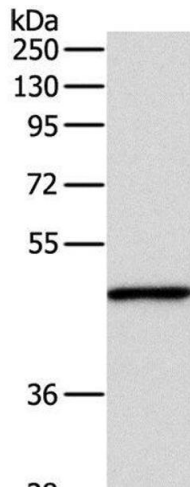
Precaution of Use: This product contains Sodium azide: a POISONOUS AND HAZARDOUS SUBSTANCE which should be handled by trained staff only.

---

Storage: -20 °C

---

Storage Comment: Store at -20°C. Avoid freeze / thaw cycles.



### Western Blotting

**Image 1.** Western Blot analysis of Mouse fat tissue using INHBA Polyclonal Antibody at dilution of 1:1000