

Datasheet for ABIN7242053

anti-Cullin 2 antibody[Go to Product page](#)**1** Image

Overview

Quantity:	200 µL
Target:	Cullin 2 (CUL2)
Reactivity:	Human, Mouse
Host:	Rabbit
Clonality:	Polyclonal
Conjugate:	This Cullin 2 antibody is un-conjugated
Application:	Western Blotting (WB), ELISA

Product Details

Immunogen:	Synthetic peptide of human CUL2
Isotype:	IgG
Characteristics:	Polyclonal Antibody
Purification:	Affinity purification

Target Details

Target:	Cullin 2 (CUL2)
Alternative Name:	CUL2 (CUL2 Products)
Background:	Human CUL2 is an ortholog of nematode cul2. Michel and Xiong (1998) identified human CUL2 cDNAs and reported that the predicted protein is 745 amino acids long. Core component of multiple cullin-RING-based ECS (ElonginB/C-CUL2/5-SOCS-box protein) E3 ubiquitin-protein ligase complexes, which mediate the ubiquitination of target proteins. May serve as

Target Details

a rigid scaffold in the complex and may contribute to catalysis through positioning of the substrate and the ubiquitin-conjugating enzyme. The E3 ubiquitin-protein ligase activity of the complex is dependent on the neddylation of the cullin subunit and is inhibited by the association of the deneddylated cullin subunit with TIP120A/CAND1. By similarity. The functional specificity of the ECS complex depends on the substrate recognition component. ECS(VHL) mediates the ubiquitination of hypoxia-inducible factor (HIF).

Molecular Weight: 87 kDa

NCBI Accession: [NP_003582](#)

UniProt: [Q13617](#)

Pathways: [M Phase](#), [Asymmetric Protein Localization](#), [SARS-CoV-2 Protein Interactome](#)

Application Details

Application Notes: WB 1:500-1:2000

Restrictions: For Research Use only

Handling

Format: Liquid

Concentration: 0.6 mg/mL

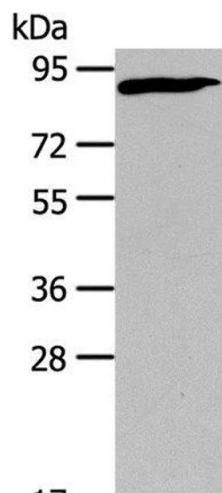
Buffer: PBS with 0.05 % sodium azide and 50 % glycerol, PH7.4

Preservative: Sodium azide

Precaution of Use: This product contains Sodium azide: a POISONOUS AND HAZARDOUS SUBSTANCE which should be handled by trained staff only.

Storage: -20 °C

Storage Comment: Store at -20°C. Avoid freeze / thaw cycles.



Western Blotting

Image 1. Western Blot analysis of PC3 cell using CUL2 Polyclonal Antibody at dilution of 1:440