

Datasheet for ABIN7242134

anti-IGF2BP1 antibody**3** Images[Go to Product page](#)

Overview

Quantity:	200 µL
Target:	IGF2BP1
Reactivity:	Human, Rat, Mouse
Host:	Rabbit
Clonality:	Polyclonal
Conjugate:	This IGF2BP1 antibody is un-conjugated
Application:	Western Blotting (WB), Immunohistochemistry (IHC), ELISA

Product Details

Immunogen:	Synthetic peptide of human IGF2BP1
Isotype:	IgG
Characteristics:	Polyclonal Antibody
Purification:	Affinity purification

Target Details

Target:	IGF2BP1
Alternative Name:	IGF2BP1 (IGF2BP1 Products)
Background:	<p>This gene encodes a member of the insulin-like growth factor 2 mRNA-binding protein family. The protein encoded by this gene contains four K homology domains and two RNA recognition motifs. It functions by binding to the mRNAs of certain genes, including insulin-like growth factor 2, beta-actin and beta-transducin repeat-containing protein, and regulating their</p>

Target Details

translation. Two transcript variants encoding different isoforms have been found for this gene.

Molecular Weight: 63 kDa

NCBI Accession: [NP_006537](#)

UniProt: [Q9NZI8](#)

Application Details

Application Notes: WB 1:500-1:2000, IHC 1:50-1:200

Restrictions: For Research Use only

Handling

Format: Liquid

Concentration: 0.6 mg/mL

Buffer: PBS with 0.05 % sodium azide and 50 % glycerol, PH7.4

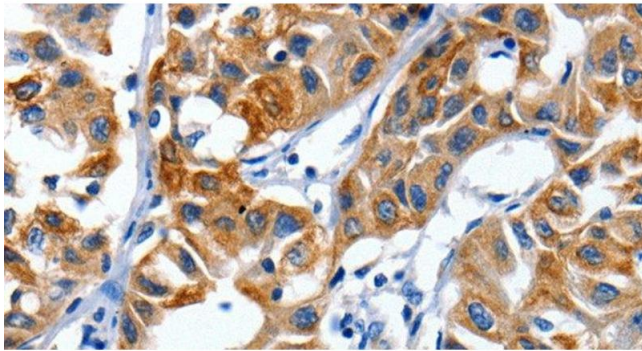
Preservative: Sodium azide

Precaution of Use: This product contains Sodium azide: a POISONOUS AND HAZARDOUS SUBSTANCE which should be handled by trained staff only.

Storage: -20 °C

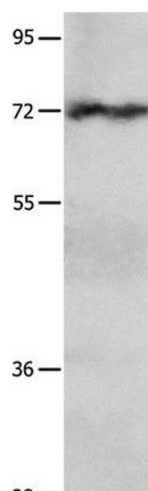
Storage Comment: Store at -20°C. Avoid freeze / thaw cycles.

Images



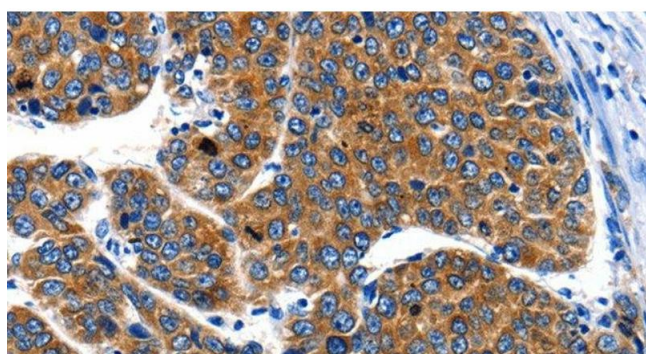
Immunohistochemistry (Paraffin-embedded Sections)

Image 1. Immunohistochemistry of paraffin-embedded Human lung cancer using IGF2BP1 Polyclonal Antibody at dilution of 1:40



Western Blotting

Image 2. Western Blot analysis of Hela cell using IGF2BP1 Polyclonal Antibody at dilution of 1:750



Immunohistochemistry (Paraffin-embedded Sections)

Image 3. Immunohistochemistry of paraffin-embedded Human liver cancer using IGF2BP1 Polyclonal Antibody at dilution of 1:40