

Datasheet for ABIN7242164

anti-Claudin 7 antibody**3** Images[Go to Product page](#)

Overview

Quantity:	200 µL
Target:	Claudin 7 (CLDN7)
Reactivity:	Human, Mouse, Rat
Host:	Rabbit
Clonality:	Polyclonal
Conjugate:	This Claudin 7 antibody is un-conjugated
Application:	Western Blotting (WB), ELISA, Immunohistochemistry (IHC)

Product Details

Immunogen:	Synthetic peptide of human CLDN7
Isotype:	IgG
Characteristics:	Polyclonal Antibody
Purification:	Affinity purification

Target Details

Target:	Claudin 7 (CLDN7)
Alternative Name:	Claudin 7 (CLDN7 Products)
Background:	This gene encodes a member of the claudin family. Claudins are integral membrane proteins and components of tight junction strands. Tight junction strands serve as a physical barrier to prevent solutes and water from passing freely through the paracellular space between epithelial or endothelial cell sheets, and also play critical roles in maintaining cell polarity and signal

Target Details

transductions. Differential expression of this gene has been observed in different types of malignancies, including breast cancer, ovarian cancer, hepatocellular carcinomas, urinary tumors, prostate cancer, lung cancer, head and neck cancers, thyroid carcinomas, etc.. Alternatively spliced transcript variants encoding different isoforms have been found.

Molecular Weight: 23 kDa

NCBI Accession: [NP_001298](#)

UniProt: [O95471](#)

Pathways: [Hepatitis C](#)

Application Details

Application Notes: WB 1:1000-1:3000, IHC 1:50-1:150

Restrictions: For Research Use only

Handling

Format: Liquid

Concentration: 0.3 mg/mL

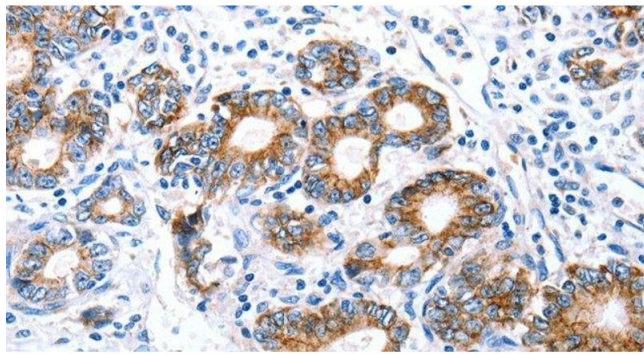
Buffer: PBS with 0.05 % sodium azide and 50 % glycerol, PH7.4

Preservative: Sodium azide

Precaution of Use: This product contains Sodium azide: a POISONOUS AND HAZARDOUS SUBSTANCE which should be handled by trained staff only.

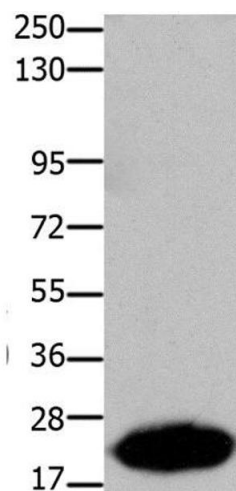
Storage: -20 °C

Storage Comment: Store at -20°C. Avoid freeze / thaw cycles.



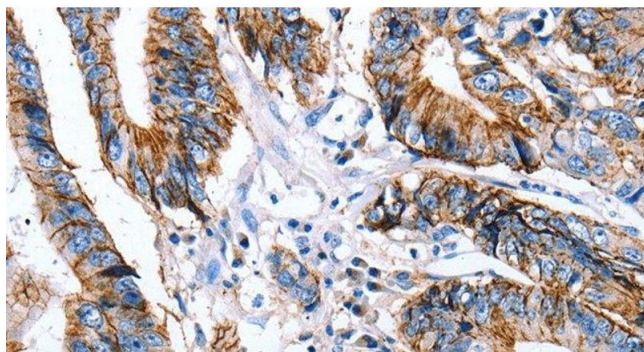
Immunohistochemistry (Paraffin-embedded Sections)

Image 1. Immunohistochemistry of paraffin-embedded Human stomach cancer using Claudin 7 Polyclonal Antibody at dilution of 1:50



Western Blotting

Image 2. Western Blot analysis of Human liver cancer tissue using Claudin 7 Polyclonal Antibody at dilution of 1:1050



Immunohistochemistry (Paraffin-embedded Sections)

Image 3. Immunohistochemistry of paraffin-embedded Human colon cancer using Claudin 7 Polyclonal Antibody at dilution of 1:50