

Datasheet for ABIN7242185

**anti-CSF2RA antibody****3** Images[Go to Product page](#)

## Overview

|              |  |
|--------------|--|
| Quantity:    | 200 µL   |
| Target:      | CSF2RA   |
| Reactivity:  | Human  |
| Host:        | Rabbit   |
| Clonality:   | Polyclonal   |
| Conjugate:   | This CSF2RA antibody is un-conjugated                    |
| Application: | Western Blotting (WB), ELISA, Immunohistochemistry (IHC) |

## Product Details

|                  |                                   |
|------------------|-----------------------------------|
| Immunogen:       | Synthetic peptide of human CSF2RA |
| Isotype:         | IgG                               |
| Characteristics: | Polyclonal Antibody               |
| Purification:    | Affinity purification             |

## Target Details

|                   |  |
|-------------------|--|
| Target:           | CSF2RA   |
| Alternative Name: | CD116 ( <a href="#">CSF2RA Products</a> )  |
| Background:       | The protein encoded by this gene is the alpha subunit of the heterodimeric receptor for colony stimulating factor 2, a cytokine which controls the production, differentiation, and function of granulocytes and macrophages. The encoded protein is a member of the cytokine family of receptors. This gene is found in the pseudoautosomal region (PAR) of the X and Y |

## Target Details

chromosomes. Multiple transcript variants encoding different isoforms have been found for this gene, with some of the isoforms being membrane-bound and others being soluble.

Molecular Weight: 46 kDa

NCBI Accession: [NP\\_006131](#)

UniProt: [P15509](#)

Pathways: [JAK-STAT Signaling](#)

## Application Details

Application Notes: WB 1:500-1:2000, IHC 1:50-1:200

Restrictions: For Research Use only

## Handling

Format: Liquid

Concentration: 0.7 mg/mL

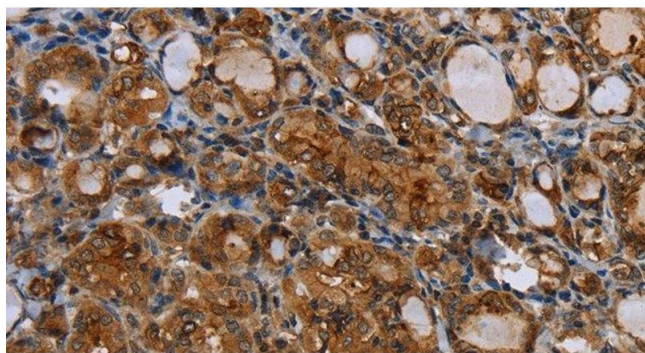
Buffer: PBS with 0.05 % sodium azide and 50 % glycerol, PH7.4

Preservative: Sodium azide

Precaution of Use: This product contains Sodium azide: a POISONOUS AND HAZARDOUS SUBSTANCE which should be handled by trained staff only.

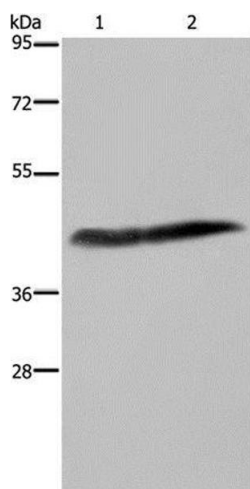
Storage: -20 °C

Storage Comment: Store at -20°C. Avoid freeze / thaw cycles.



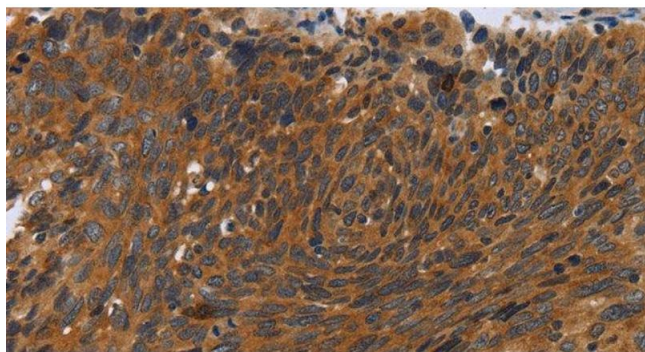
#### Immunohistochemistry (Paraffin-embedded Sections)

**Image 1.** Immunohistochemistry of paraffin-embedded Human thyroid cancer using CD116 Polyclonal Antibody at dilution of 1:35



#### Western Blotting

**Image 2.** Western Blot analysis of Human placenta tissue and HepG2 cell using CD116 Polyclonal Antibody at dilution of 1:250



#### Immunohistochemistry (Paraffin-embedded Sections)

**Image 3.** Immunohistochemistry of paraffin-embedded Human cervical cancer using CD116 Polyclonal Antibody at dilution of 1:35