



[Go to Product page](#)

Datasheet for ABIN7242206

anti-HCN1 antibody

2 Images

Overview

Quantity:	200 µL
Target:	HCN1
Reactivity:	Human, Mouse, Rat
Host:	Rabbit
Clonality:	Polyclonal
Conjugate:	This HCN1 antibody is un-conjugated
Application:	Western Blotting (WB), Immunohistochemistry (IHC), ELISA

Product Details

Immunogen:	Synthetic peptide of human HCN1
Isotype:	IgG
Characteristics:	Polyclonal Antibody
Purification:	Affinity purification

Target Details

Target:	HCN1
Alternative Name:	HCN1 (HCN1 Products)
Background:	The membrane protein encoded by this gene is a hyperpolarization-activated cation channel that contributes to the native pacemaker currents in heart and neurons. The encoded protein can homodimerize or heterodimerize with other pore-forming subunits to form a potassium channel. This channel may act as a receptor for sour tastes.

Target Details

Molecular Weight:	99 kDa
NCBI Accession:	NP_066550
UniProt:	O60741
Pathways:	Asymmetric Protein Localization

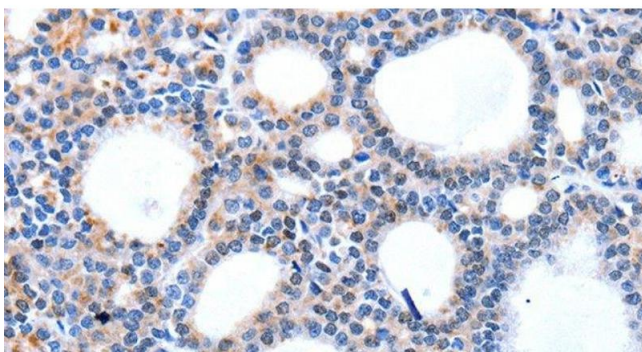
Application Details

Application Notes:	WB 1:500-1:2000, IHC 1:25-1:100
Restrictions:	For Research Use only

Handling

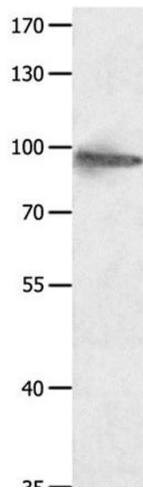
Format:	Liquid
Concentration:	0.5 mg/mL
Buffer:	PBS with 0.05 % sodium azide and 50 % glycerol, PH7.4
Preservative:	Sodium azide
Precaution of Use:	This product contains Sodium azide: a POISONOUS AND HAZARDOUS SUBSTANCE which should be handled by trained staff only.
Storage:	-20 °C
Storage Comment:	Store at -20°C. Avoid freeze / thaw cycles.

Images



Immunohistochemistry (Paraffin-embedded Sections)

Image 1. Immunohistochemistry of paraffin-embedded Human thyroid cancer using HCN1 Polyclonal Antibody at dilution of 1:50



Western Blotting

Image 2. Western Blot analysis of Hela cell using HCN1 Polyclonal Antibody at dilution of 1:950