

Datasheet for ABIN7242224  
**anti-PPP1R13L antibody**

## 3 Images

[Go to Product page](#)

## Overview

Quantity:	200 µL
Target:	PPP1R13L
Reactivity:	Human, Mouse
Host:	Rabbit
Clonality:	Polyclonal
Conjugate:	This PPP1R13L antibody is un-conjugated
Application:	Western Blotting (WB), ELISA, Immunohistochemistry (IHC)

## Product Details

Immunogen:	Synthetic peptide of human PPP1R13L
Isotype:	IgG
Characteristics:	Polyclonal Antibody
Purification:	Affinity purification

## Target Details

Target:	PPP1R13L
Alternative Name:	PPP1R13L ( <a href="#">PPP1R13L Products</a> )
Background:	RelA-associated inhibitor is a protein that in humans is encoded by the PPP1R13L gene. Regulator that plays a central role in regulation of apoptosis and transcription via its interaction with NF-kappa-B and p53/TP53 proteins. Blocks transcription of HIV-1 virus by inhibiting the action of both NF-kappa-B and SP1. Also inhibits p53/TP53 function, possibly by preventing the

## Target Details

association between p53/TP53 and ASPP1 or ASPP2, and therefore suppressing the subsequent activation of apoptosis. Interacts with RELA NF-kappa-B subunit and with SP1 via its C-terminus part. Interacts with p53/TP53, TP63 and TP73.

Molecular Weight: 89 kDa

NCBI Accession: [NP\\_006654](#)

UniProt: [Q8WUF5](#)

## Application Details

Application Notes: WB 1:500-1:2000, IHC 1:50-1:200

Restrictions: For Research Use only

## Handling

Format: Liquid

Concentration: 0.6 mg/mL

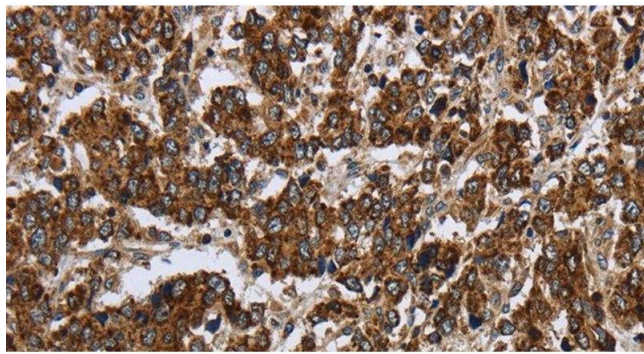
Buffer: PBS with 0.05 % sodium azide and 50 % glycerol, PH7.4

Preservative: Sodium azide

Precaution of Use: This product contains Sodium azide: a POISONOUS AND HAZARDOUS SUBSTANCE which should be handled by trained staff only.

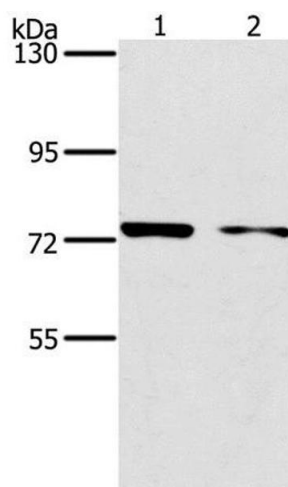
Storage: -20 °C

Storage Comment: Store at -20°C. Avoid freeze / thaw cycles.



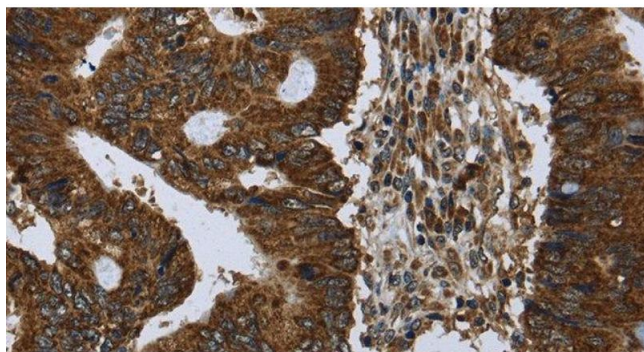
#### Immunohistochemistry (Paraffin-embedded Sections)

**Image 1.** Immunohistochemistry of paraffin-embedded Human liver cancer using PPP1R13L Polyclonal Antibody at dilution of 1:30



#### Western Blotting

**Image 2.** Western Blot analysis of MCF7 and HeLa cell using PPP1R13L Polyclonal Antibody at dilution of 1:500



#### Immunohistochemistry (Paraffin-embedded Sections)

**Image 3.** Immunohistochemistry of paraffin-embedded Human colon cancer using PPP1R13L Polyclonal Antibody at dilution of 1:30