

Datasheet for ABIN7242236

**anti-KCNA1 antibody****2** Images[Go to Product page](#)

## Overview

Quantity:	200 µL
Target:	KCNA1
Reactivity:	Human, Mouse, Rat
Host:	Rabbit
Clonality:	Polyclonal
Conjugate:	This KCNA1 antibody is un-conjugated
Application:	Western Blotting (WB), ELISA, Immunohistochemistry (IHC)

## Product Details

Immunogen:	Synthetic peptide of human KCNA1
Isotype:	IgG
Characteristics:	Polyclonal Antibody
Purification:	Affinity purification

## Target Details

Target:	KCNA1
Alternative Name:	KCNA1 ( <a href="#">KCNA1 Products</a> )
Background:	This gene encodes a voltage-gated delayed potassium channel that is phylogenetically related to the Drosophila Shaker channel. The encoded protein has six putative transmembrane segments (S1-S6), and the loop between S5 and S6 forms the pore and contains the conserved selectivity filter motif (GYGD). The functional channel is a homotetramer. The N-terminus of the

## Target Details

channel is associated with beta subunits that can modify the inactivation properties of the channel as well as affect expression levels. The C-terminus of the channel is complexed to a PDZ domain protein that is responsible for channel targeting. Mutations in this gene have been associated with myokymia with periodic ataxia (AEMK).

Molecular Weight: 56 kDa

NCBI Accession: [NP\\_000208](#)

UniProt: [Q09470](#)

## Application Details

Application Notes: WB 1:500-1:2000, IHC 1:15-1:50

Restrictions: For Research Use only

## Handling

Format: Liquid

Concentration: 0.3 mg/mL

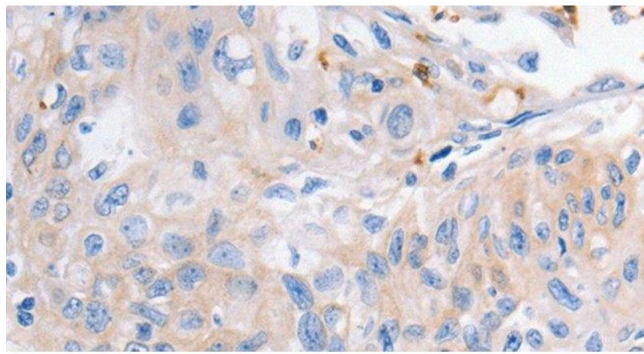
Buffer: PBS with 0.05 % sodium azide and 50 % glycerol, PH7.4

Preservative: Sodium azide

Precaution of Use: This product contains Sodium azide: a POISONOUS AND HAZARDOUS SUBSTANCE which should be handled by trained staff only.

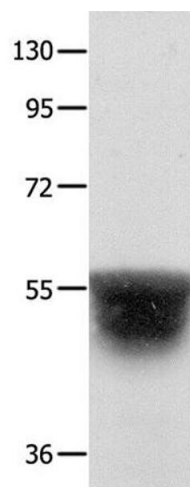
Storage: -20 °C

Storage Comment: Store at -20°C. Avoid freeze / thaw cycles.



#### Immunohistochemistry (Paraffin-embedded Sections)

**Image 1.** Immunohistochemistry of paraffin-embedded Human cervical cancer using KCNA1 Polyclonal Antibody at dilution of 1:30



#### Western Blotting

**Image 2.** Western Blot analysis of Human brain malignant glioma tissue using KCNA1 Polyclonal Antibody at dilution of 1:400