

Datasheet for ABIN7242239

anti-KCNC2 antibody**2** Images[Go to Product page](#)

Overview

Quantity:	200 µL
Target:	KCNC2
Reactivity:	Human, Mouse, Rat
Host:	Rabbit
Clonality:	Polyclonal
Conjugate:	This KCNC2 antibody is un-conjugated
Application:	ELISA, Immunohistochemistry (IHC)

Product Details

Immunogen:	Synthetic peptide of human KCNC2
Isotype:	IgG
Characteristics:	Polyclonal Antibody
Purification:	Affinity purification

Target Details

Target:	KCNC2
Alternative Name:	KCNC2 (KCNC2 Products)
Background:	The Shaker gene family of Drosophila encodes components of voltage-gated potassium channels and is comprised of four subfamilies. Based on sequence similarity, this gene is similar to one of these subfamilies, namely the Shaw subfamily. The protein encoded by this gene belongs to the delayed rectifier class of channel proteins and is an integral membrane

Target Details

protein that mediates the voltage-dependent potassium ion permeability of excitable membranes. Several transcript variants encoding different isoforms have been found for this gene.

NCBI Accession: [NP_631875](#)

UniProt: [Q96PR1](#)

Application Details

Application Notes: IHC 1:150-1:500

Restrictions: For Research Use only

Handling

Format: Liquid

Concentration: 0.7 mg/mL

Buffer: PBS with 0.05 % sodium azide and 50 % glycerol, PH7.4

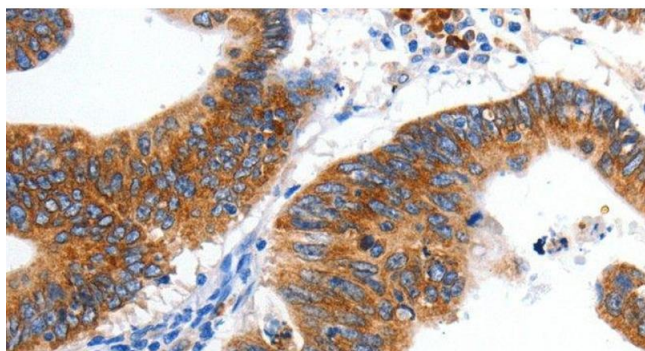
Preservative: Sodium azide

Precaution of Use: This product contains Sodium azide: a POISONOUS AND HAZARDOUS SUBSTANCE which should be handled by trained staff only.

Storage: -20 °C

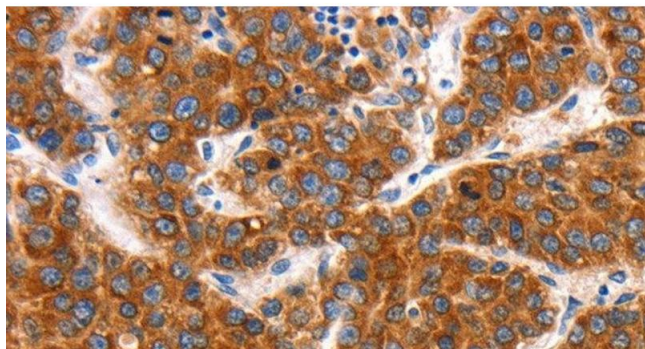
Storage Comment: Store at -20°C. Avoid freeze / thaw cycles.

Images



Immunohistochemistry (Paraffin-embedded Sections)

Image 1. Immunohistochemistry of paraffin-embedded Human colon cancer tissue using KCNC2 Polyclonal Antibody at dilution 1:100



Immunohistochemistry (Paraffin-embedded Sections)

Image 2. Immunohistochemistry of paraffin-embedded Human liver cancer tissue using KCNC2 Polyclonal Antibody at dilution 1:100